

StraightLine Direction Drilling System

Model 905

Parts Catalog



1450 South Spencer Road • P.O. Box 388 • Newton, Kansas 67114
Phone: (316)-238-5511 • (800) 654-3484 • Fax: (316) 283-2738

Catalog No. 9010009
Rev 12.96

Ordering and Warranty Information

Quality

StraightLine Manufacturing, Inc. is dedicated to providing quality products and services to satisfy our customers' needs. Quality is the responsibility of every employee. Our focus is on continuously improving and innovating quality products, and providing technical support to our valued customers.

How To Order

Contact your local StraightLine Dealer or StraightLine Manufacturing, Inc.

StraightLine Manufacturing, Inc.
1450 South Spencer Road
P.O.Box 388
Newton, Kansas 67114 / USA
(316) 283-5511 Telephone
(316) 283-5513 Fax

Please use StraightLine part numbers when ordering. All customer orders will be invoiced through the respective StraightLine Dealer. Credit card orders are welcome.

Minimum Order

StraightLine manufacturing, Inc. requires a \$75.00 net minimum order. Orders less than \$75.00 will not be accepted.

Conditions of Sale -- Terms and Delivery

with approved credit, 30 day terms will be granted. A 2% discount is available for payments postmarked by the 10th day of invoice date. No discounts are allowed on freight.

Claims and Returns

In all cases, risk of loss and damage to goods in transit shall fall upon the purchaser. It is the purchaser's responsibility to file any loss damage with the carrier. Inspect all shipment for damage upon receipt. If any damage is noticed with package or carton, do not sign for or accept it without the driver making a notation on the freight bill or receipt. After receiving the shipment, remove the goods and thoroughly inspect immediately. If any concealed damage is discovered, notify the delivering carrier immediately in writing. Do not move damaged merchandise until further inspection has been made. Save the carton and packing material for inspection. Do not attempt to return any goods to our factory without making prior arrangements with StraightLine Manufacturing, Inc.

Claims for shortages or inaccurate filling of orders must be made within 15 days after receipt of goods. All returns must have a returned goods authorization number (RGA number) regardless of the reason for return. Please contact StraightLine Manufacturing, Inc. for the RGA number. This number must appear on the outside of the box as well as on a tag tied to the individual part. There will be a restocking charge applied on any items returned for credit or exchange when there error is not ours. Goods must be in new original condition.

Packaging

Returned goods must be properly and securely packed to avoid damage in shipment. Goods damaged in shipment due to poor or improper packaging will not be warranted. Proper storage and shipment of warranty parts is a customer responsibility. If any components are damaged by rain, mud, rust, poor packaging, etc. the purchaser will be charged for the part.

Inspection Charge

Goods returned for warranty consideration inspection, and (or) testing, and found to be in acceptable working condition, will be subject to a minimum \$25.00 inspection and handling charge for each item.

Warranty

Warranty allowance is based on 12 months or 1,000 hours of use from the date of delivery whichever occurs first. Warranty credit will be based on invoice price.

Genuine StraightLine parts that are replaced under this warranty and installed by an authorized StraightLine Dealer or StraightLine service Representative will be repaired or replaced, with a new or remanufactured part as StraightLine elects, if a defect in materials or workmanship appears during the period of coverage.

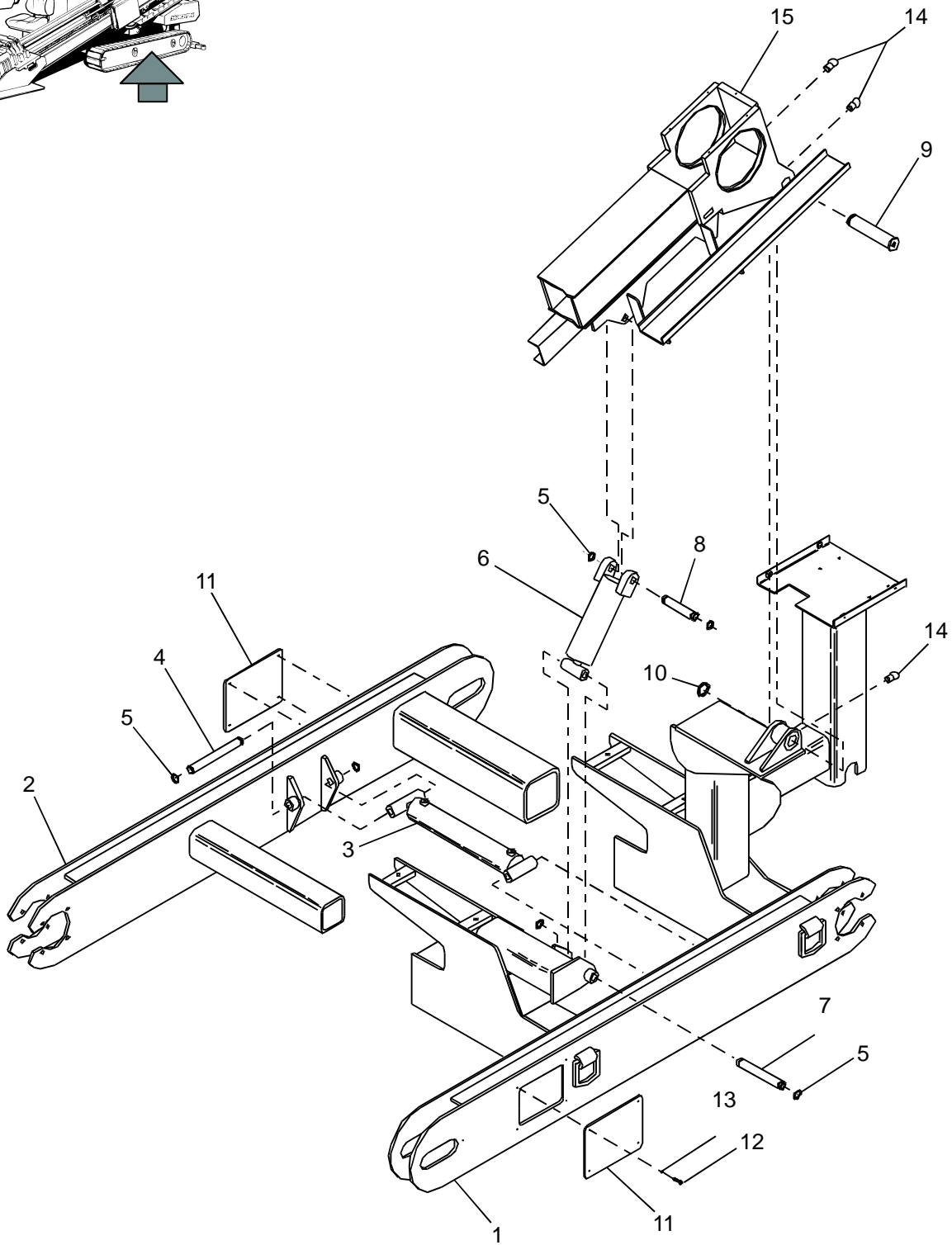
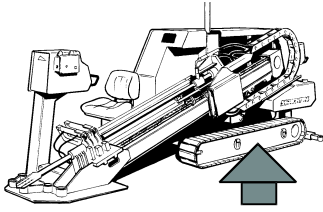
SPECIFIC POLICIES AND PROCEDURES FOR THE OPERATION OF THIS WARRANTY ARE SET FORTH IN STRAIGHTLINE'S DEALER WARRANTY SERVICE - POLICIES & PROCEDURES MANUAL..

Table of Contents

Section	Description	Page
1. Structural:	Track Frame Assembly.....	3
	Track Drive.....	5
	Track Idler / Chain.....	7
	Drill Frame Assembly.....	9
	Thrust Sprocket Assembly.....	11
	Thrust Idler Assembly.....	13
	Carriage Frame Assembly.....	15
	Carriage Frame Assembly (continued).....	17
	Carriage Shaft Assembly.....	19
	Mud Swivel Assembly.....	21
	Power Wrench Assembly.....	23
	Power Wrench Assembly (2nd Generation).....	25
	Control Panel Assembly - Front.....	27
	Control Panel Assembly - Rear.....	29
	Rear Foot / Seat Assembly.....	31
	Cowling Assembly.....	33
	Engine Mount / Assembly.....	35
	Fuel Tank.....	37
	Hydraulic Tank.....	39
	2. Electrical:	Strike Alert / Grounding Mat.....
Hatz Box Wiring.....		45
Electrical Schematic.....		47
Wiring Assembly Diagram.....		49
3. Hydraulics:	Hydraulic Schematic.....	53
	Hydraulic Assembly Diagram.....	55
4. Accessories:	Stakedown Package.....	59
	Decal Location.....	61
	Standard Tooling Package.....	63

Section 1: Structural

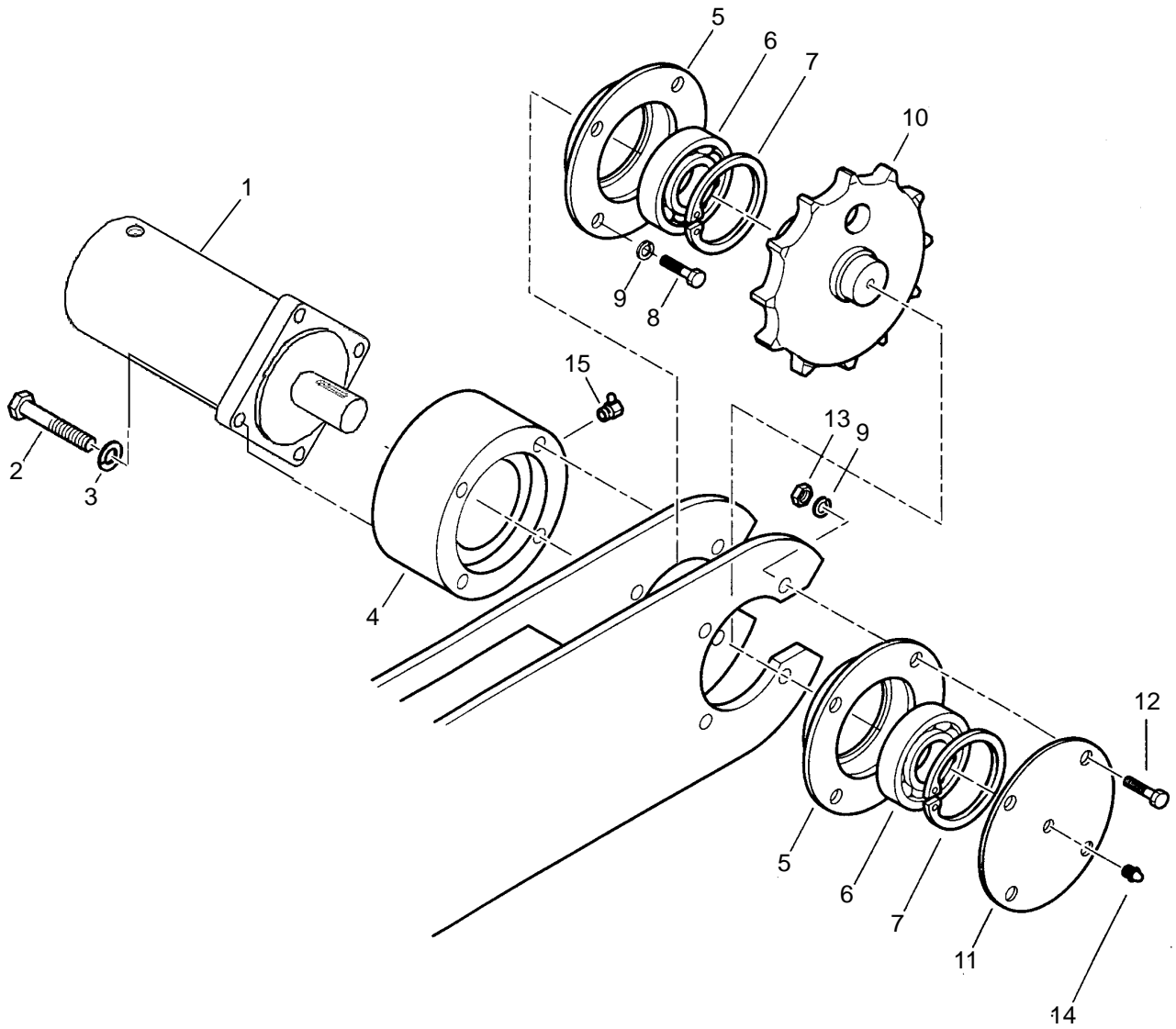
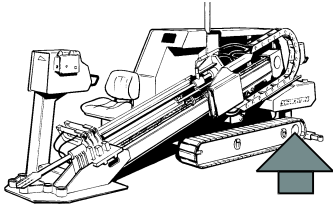
Track Frame Assembly



Track Frame Assembly Parts List

<u>Item</u>	<u>Part Number</u>	<u>Description</u>	<u>Qty</u>
1.....	236-8246-04.....	Frame, Track R.H.....	1
2.....	236-8247-04.....	Frame, Track L.H.....	1
3.....	236-8803-04.....	Cylinder, Hydraulic - Spread.....	1
ref.....	236-9346-02.....	Seal Kit.....	ref
4.....	236-7651-04.....	Pin, Cylinder - Spread.....	2
5.....	236-3684-02.....	Ring, Retaining.....	8
6.....	236-8192-04.....	Cylinder, Hydraulic - Pivot.....	1
ref.....	236-9348-02.....	Seal Kit.....	ref
7.....	236-8664-04.....	Pin, Cylinder - Lower.....	1
8.....	236-7648-04.....	Pin, Cylinder - Upper.....	1
9.....	236-8715-04.....	Pin, Frame Pivot.....	1
10.....	236-6891-02.....	Ring, Retaining.....	1
11.....	236-6732-03.....	Cover, Access.....	2
12.....	51618X34HB.....	Bolt, Hex - 5/16 NC x 3/4.....	4
13.....	516LW.....	Washer, Lock - 5/16.....	4
14.....	701-127-02.....	Zerk, Grease - 1/8 NPT.....	3
15.....	236-8285-04.....	Frame, Drill.....	ref

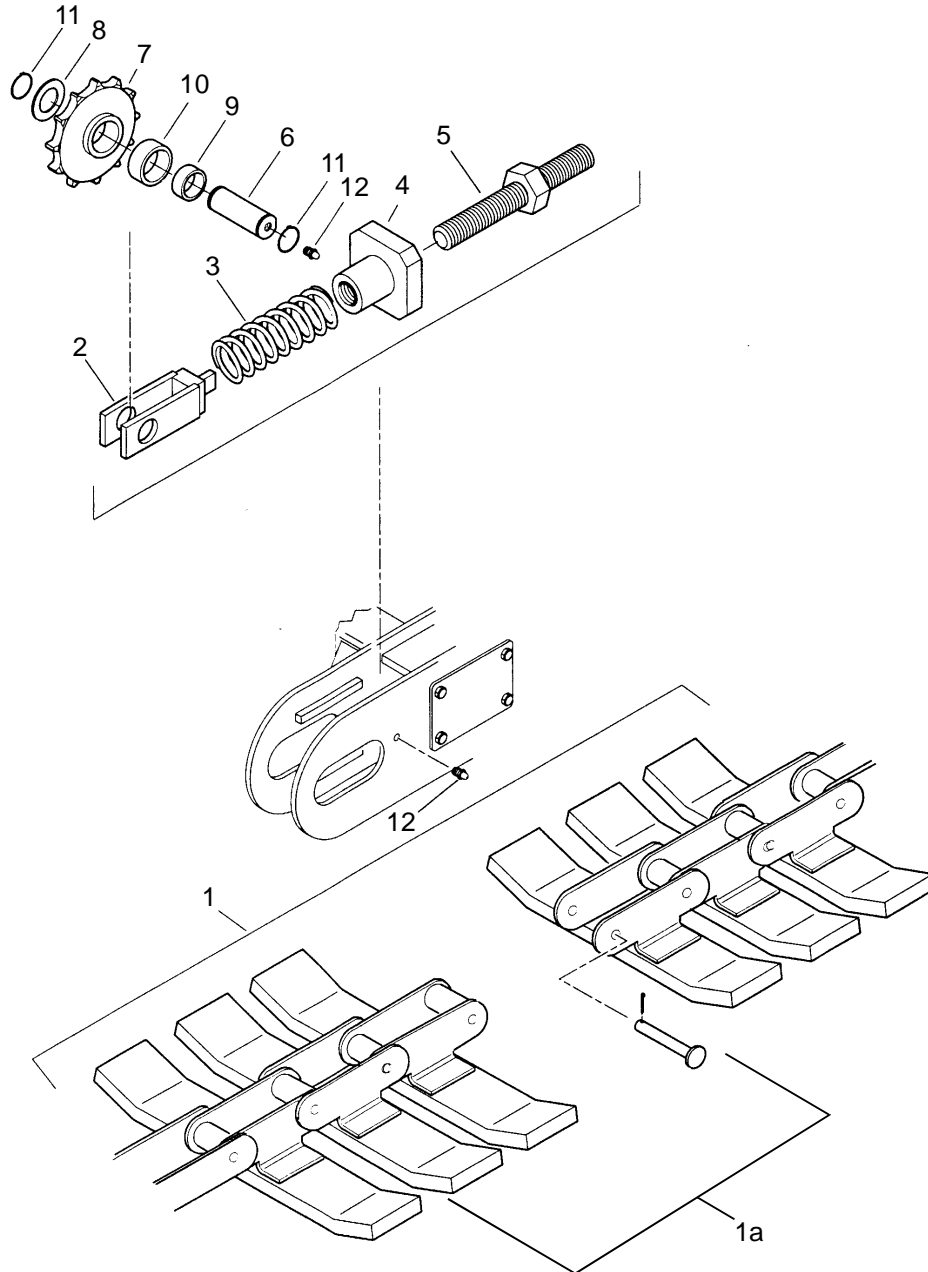
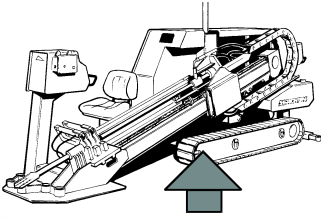
Track Drive



Track Drive Parts List

<u>Item</u>	<u>Part Number</u>	<u>Description</u>	<u>Qty</u>
1.....	236-8207-02.....	Motor, Hydraulic.....	1
ref.....	236-9039-02.....	Seal Kit.....	ref
2.....	5811X225HB.....	Bolt, Hex - 5/8 NC x 2 1/4.....	8
3.....	58LW.....	Washer, Lock - 5/8.....	8
4.....	236-7520-04.....	Mount, Motor.....	2
5.....	236-6729-04.....	Carrier, Bearing.....	2
6.....	236-6735-02.....	Bearing.....	4
7.....	236-6737-02.....	Ring, Retaining.....	4
8.....	1213X134HB.....	Bolt, Hex - 1/2 NC x 1 3/4.....	8
9.....	12LW.....	Washer, Lock - 1/2.....	16
10.....	236-6731-04.....	Sprocket, Drive.....	2
11.....	236-7455-04.....	Plate, Cover.....	2
12.....	1213X112HB.....	Bolt, Hex - 1/2 NC x 1 1/2.....	8
13.....	1213HN.....	Nut, Hex - 1/2 NC.....	8
14.....	236-1988-02.....	Zerk, Grease - 3/16 drive.....	2
15.....	701-126-02.....	Zerk, Grease - 90 degree x 1/8 NPT.....	2

Track Idler / Chain

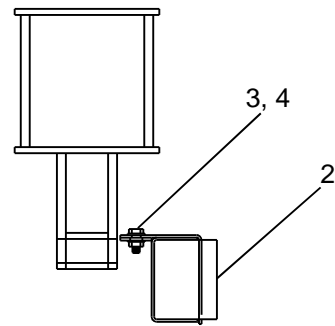
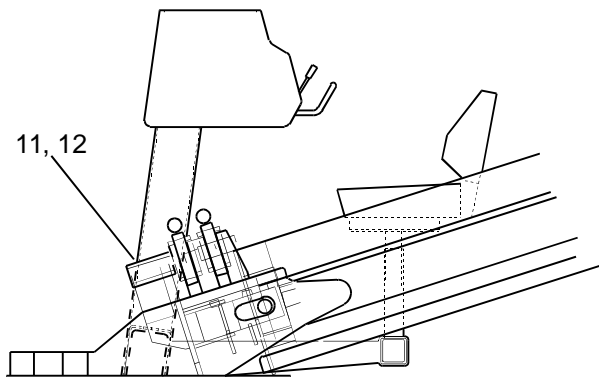
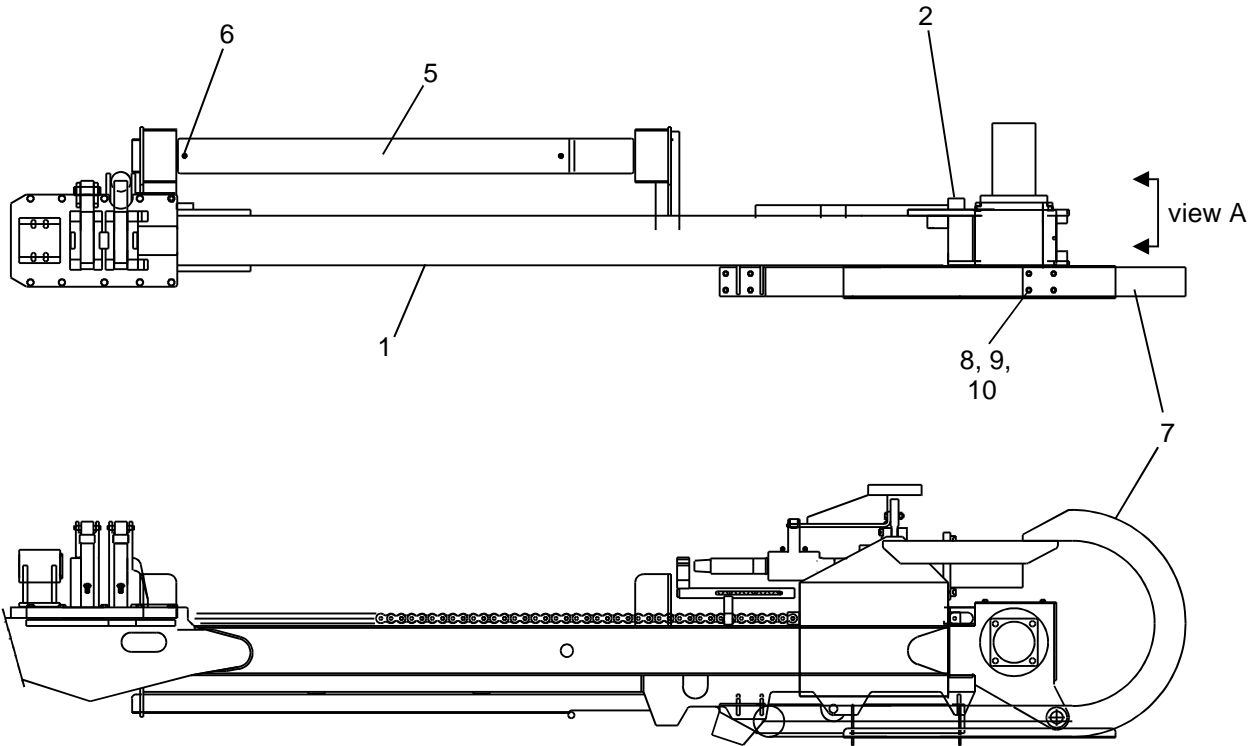
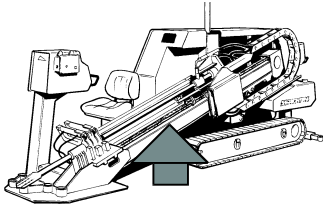


Track Idler / Chain Parts List

<u>Item</u>	<u>Part Number</u>	<u>Description</u>	<u>Qty</u>
1.....	236-6719-04.....	Chain, Track.....	2
1a.....	236-9473-02.....	*Kit, Repair-(1 attachment w/ 2 connector pins)	1
ref.....	236-9491-02.....	connector pin.....	ref
2.....	236-6752-04.....	Mount, Idler.....	2
3.....	236-6736-02.....	Spring, Idler.....	2
4.....	236-6739-04.....	Anchor, Spring.....	2
5.....	236-6740-04.....	Bolt, Adjusting.....	2
6.....	236-6738-04.....	Shaft, Idler.....	2
7.....	236-6722-04.....	Sprocket, Idler.....	2
8.....	236-6726-04.....	Spacer, Sprocket.....	2
9.....	236-2712-02.....	Bearing.....	2
10.....	236-2713-02.....	Race, Bearing.....	2
11.....	236-2885-02.....	Ring, Retaining.....	4
12.....	236-1988-02.....	Zerk, Grease - 3/16 drive.....	6

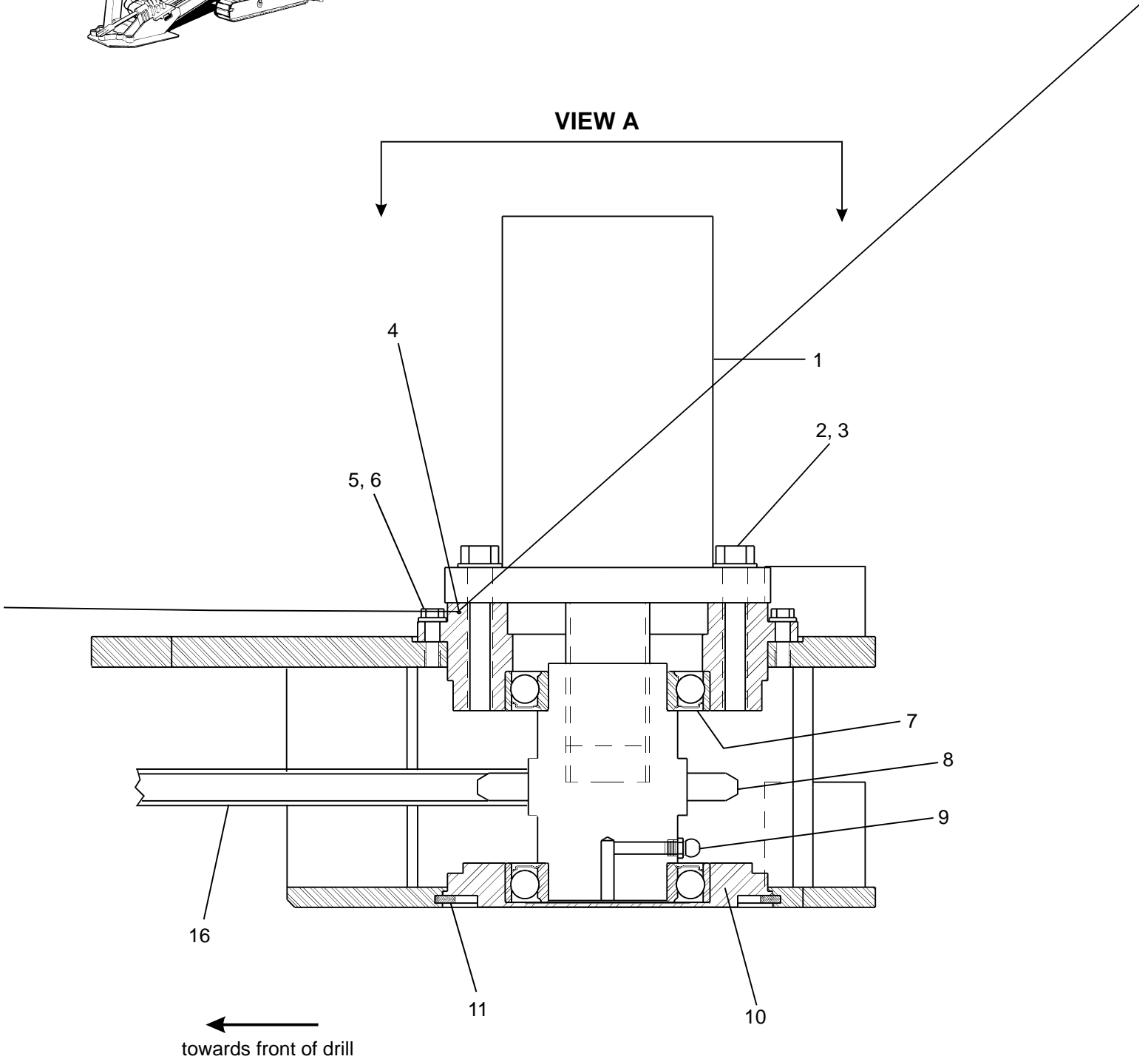
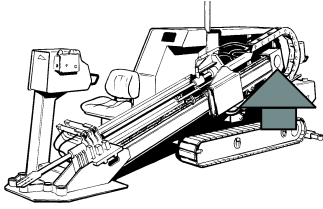
* each chain repair kit contains (2) pitches of 2.609 pitch chain and (2) connector pins

Drill Frame Assembly



view A

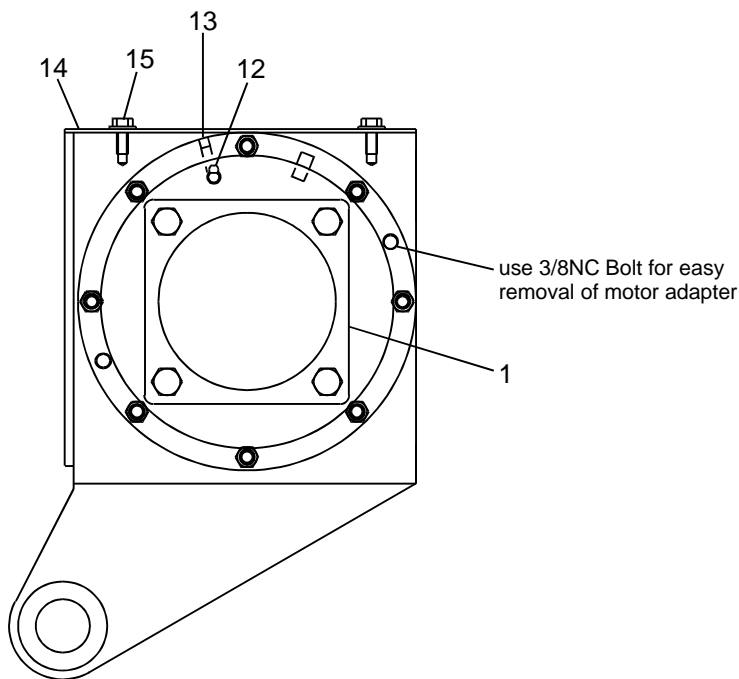
Thrust Sprocket Assembly



Top View of Drill at rear of machine

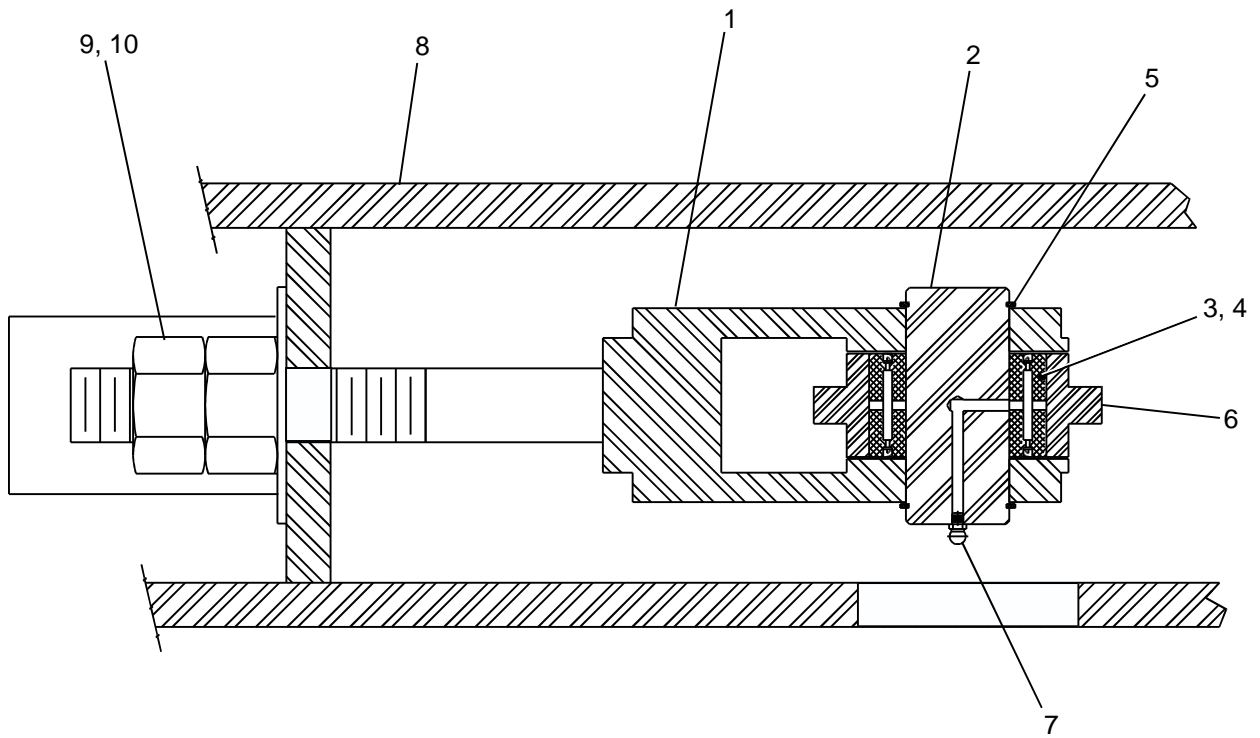
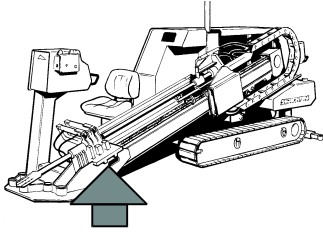
Thrust Sprocket Assembly Parts List

Item	Part Number	Description	Qty
1.....	236-8224-02.....	Motor, Hydraulic - Thrust.....	1
ref.....	236-9039-02.....	Seal Kit.....	ref
2.....	5811X212HB.....	Bolt, Hex - 5/8 NC x 2 1/2.....	4
3.....	58LW.....	Washer, Lock - 5/8.....	4
4.....	236-7580-04.....	Mount, Motor.....	1
5.....	3816X1HB.....	Bolt, Hex - 3/8 N x 1.....	8
6.....	38LW.....	Washer, Lock - 3/8.....	8
7.....	236-8435-02.....	Bearing, Thrust.....	2
8.....	236-7577-04.....	Sprocket, Thrust.....	1
9.....	701-127-02.....	Zerk, Grease - 1/8 NPT	1
10.....	236-8314-04.....	Hub, Bearing.....	1
11.....	236-8436-02.....	Ring, Retaining.....	1
ref.....	236-9349-02.....	Pliers, Industrial.....	ref
12.....	701-126-02.....	Zerk, Grease - 1/8 NPT x 90 degree.....	1
13.....	701-200-02.....	Screw, Set 1/4 NC x 1/4.....	1
14.....	236-7582-04.....	Cover, Sprocket.....	1
15.....	51618X12WHB.....	Bolt, Hex - 5/16 NC x 1/2.....	5
16.....	236-8214-04.....	Chain, Thrust.....	1
ref.....	236-9236-02.....	Link, Connecting.....	ref



View A
(looking from operator's side)

Thrust Idler

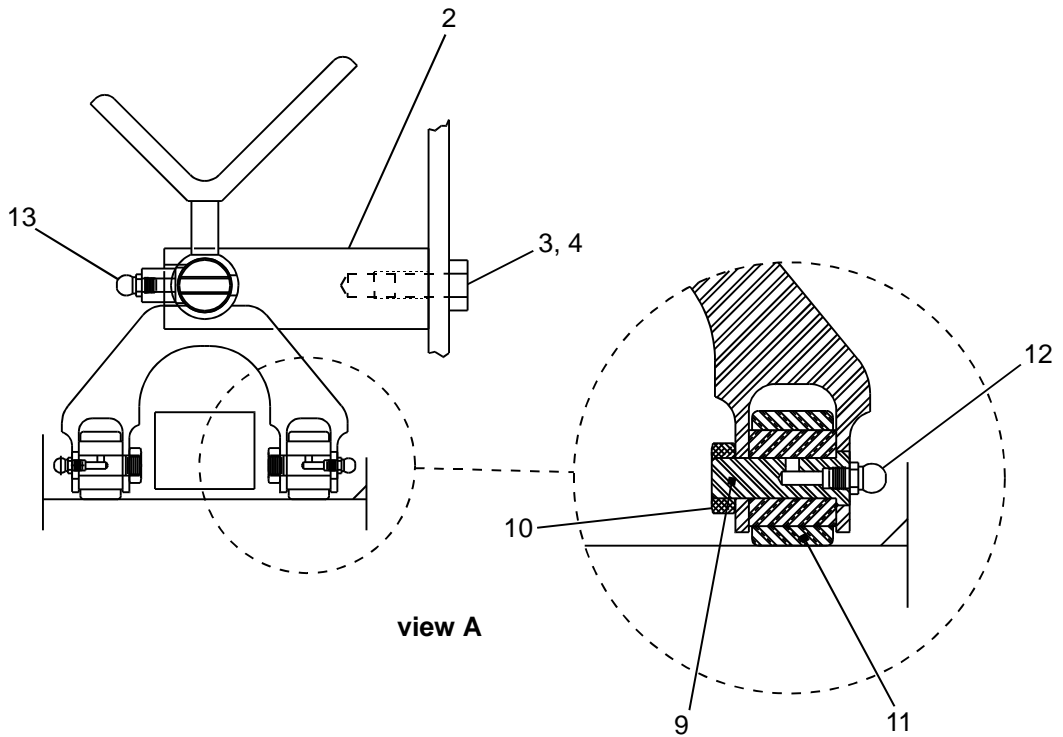
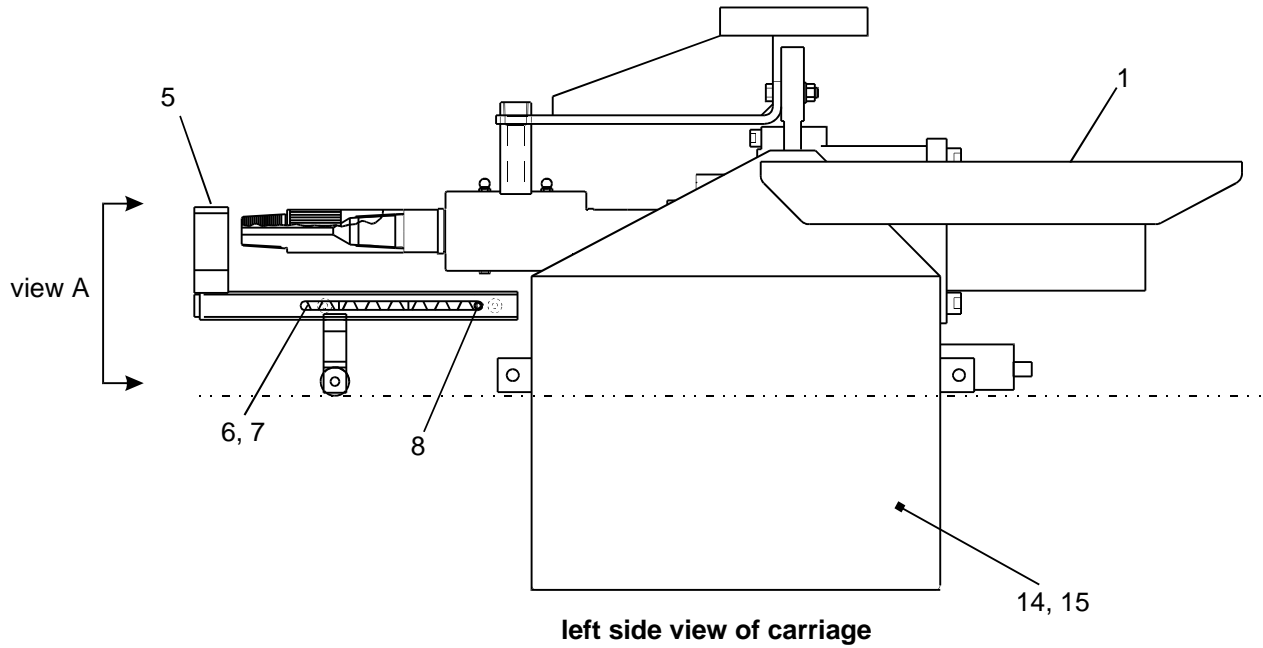
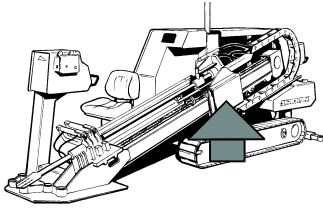


Top View of Drill at front of machine

Thrust Idler Parts List

<u>Item</u>	<u>Part Number</u>	<u>Description</u>	<u>Qty</u>
1.....	236-7587-04.....	Frame, Idler.....	1
2.....	236-7586-04.....	Shaft, Idler.....	1
3.....	236-2712-02.....	Bearing, Outer.....	1
4.....	236-2713-02.....	Race, Inner.....	1
5.....	236-2885-02.....	Ring, Retaining.....	2
6.....	236-7585-04.....	Idler, Thrust.....	1
7.....	236-1988-02.....	Zerk, Grease - 3/16 Drive.....	1
8.....	236-8285-04.....	Frame, Drill.....	ref
9.....	11812HN.....	Nut, Hex - 1 1/8 - 12 NF.....	2
10.....	118FW.....	Washer, Flat - 1 1/8.....	1

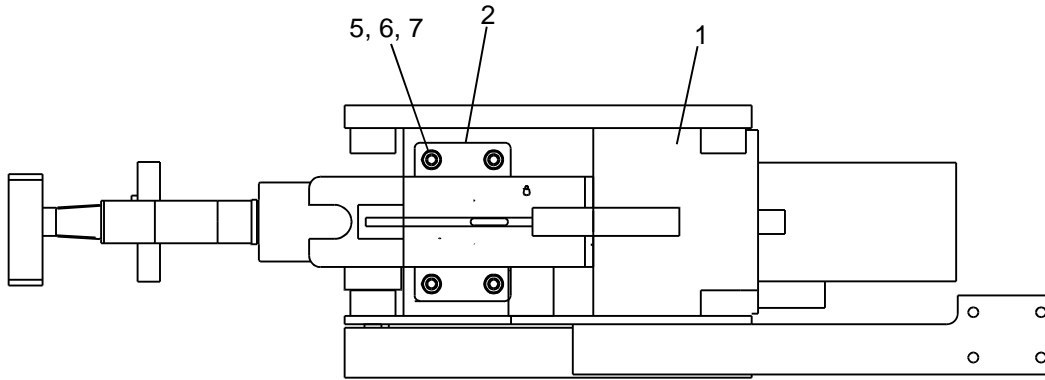
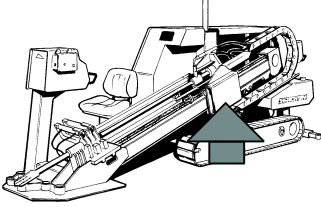
Carriage Frame Assembly



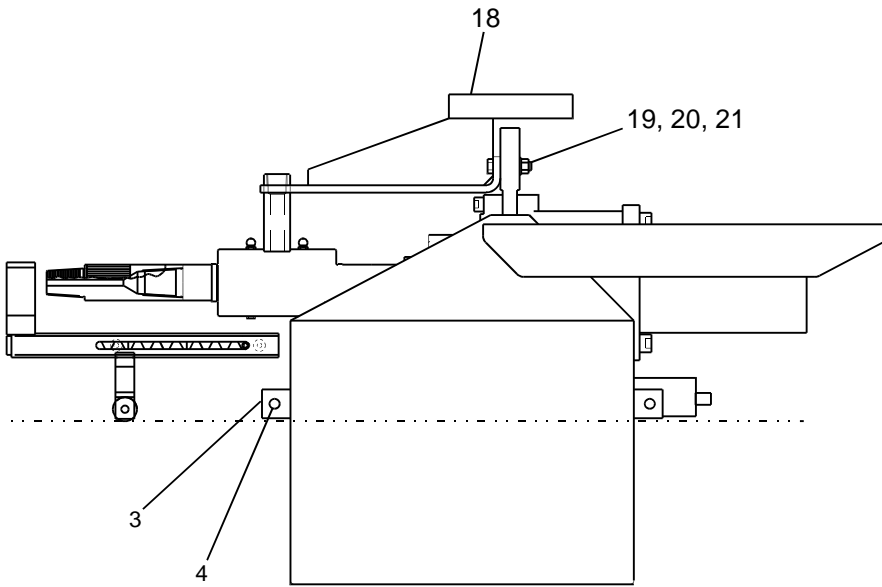
Carriage Frame Assembly Parts List

<u>Item</u>	<u>Part Number</u>	<u>Description</u>	<u>Qty</u>
1.....	236-8236-04.....	Frame, Carriage.....	1
2.....	236-8286-04.....	Holder, Pipe Support.....	1
3.....	1213X1HB.....	Bolt, Hex - 1/2 NC X 1.....	2
4.....	12LW.....	Washer, Lock - 1/2.....	2
5.....	236-8268-04.....	Support, Pipe.....	1
6.....	236-8330-02.....	Spring, Compression.....	2
7.....	236-8331-02.....	Spring, Compression.....	2
8.....	2363-8333-02.....	Bolt, Shoulder.....	1
9.....	236-8283-04.....	Shaft, Roller.....	2
10.....	3824HJN.....	Nut, Jam - 3/8 - 24 NF.....	2
11.....	236-8329-02.....	Bearing, Roller.....	2
12.....	236-1988-02.....	Zerk, Grease - 3/16 Drive.....	2
13.....	701-126-02.....	Zerk, Grease - 1/8 NPT 90 degree.....	2
14.....	236-8248-04.....	Cover Frame.....	1
15.....	51618X112WHB.....	Bolt, Hex - 5/16 NC x 1 1/2.....	4

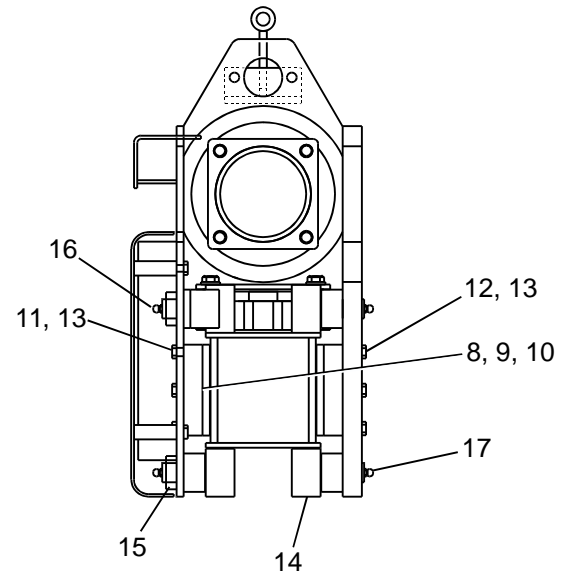
Carriage Frame Assembly (cont.)



Top View of Carriage



Left Side View of Carriage

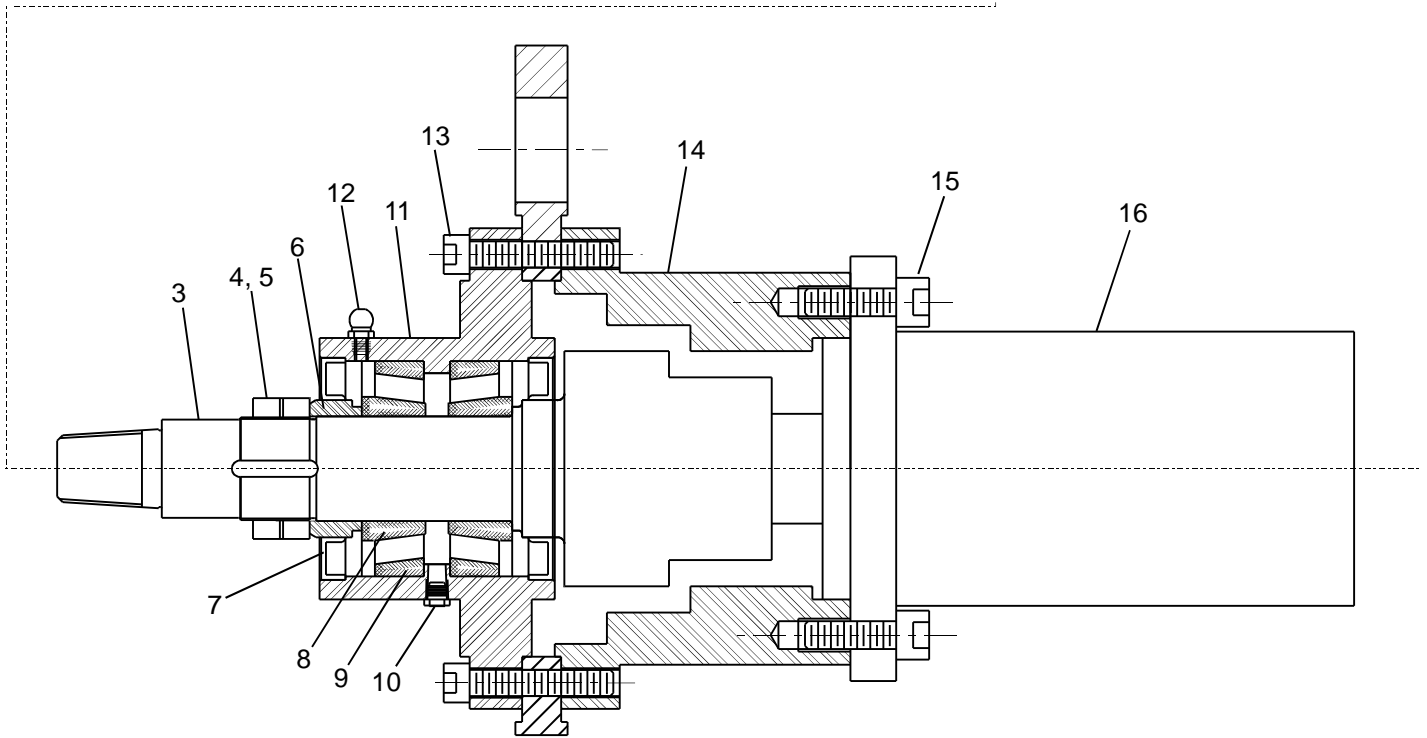
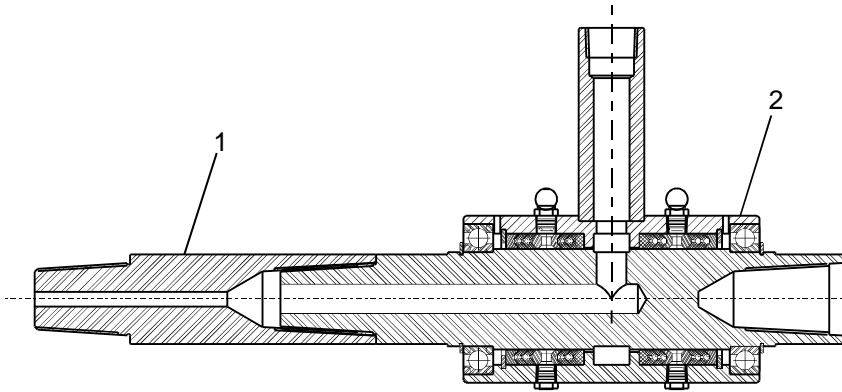
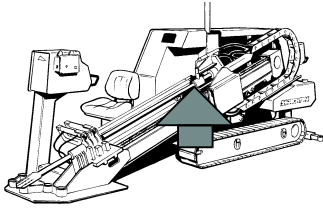


Rear View of Carriage

Carriage Frame Assembly (Cont.) Parts List

<u>Item</u>	<u>Part Number</u>	<u>Description</u>	<u>Qty</u>
1.....	236-8818-04.....	Keeper, Rear.....	1
2.....	236-8819-04.....	Keeper, Front.....	1
3.....	236-8820-04.....	Anchor, Chain.....	1
4.....	236-8824-02.....	Bushing, Chain.....	2
5.....	236-8821-03.....	Spacer, Mounting.....	6
6.....	1213X2HB.....	Bolt, Hex - 1/2 NC x 2.....	6
7.....	12LW.....	Washer, Lock - 1/2.....	6
8.....	51618X1FMS.....	Screw, Machine - 5/16 NC x 1.....	4
9.....	236-7602-04.....	Strip, Rub.....	2
10.....	236-7601-04.....	Spacer, Strip.....	2
11.....	51618X1HB.....	Bolt, Hex - 5/16 NC x 1.....	3
12.....	51618X112HB.....	Bolt, Hex - 5/16 NC x 1 1/2.....	3
13.....	516LW.....	Washer, Lock - 5/16.....	6
14.....	236-8332-02.....	Bearing, Roller.....	8
15.....	114HJN.....	Nut, Jam - 1-14.....	8
16.....	236-7797-02.....	Zerk, Grease - 3/16 Drive 65 degree.....	4
17.....	236-1988-02.....	Zerk, Grease - 3/16 Drive.....	4
18.....	236-7235-04.....	Bracket, Filter.....	1
ref.....	236-2598-02.....	Filter, 30 mesh.....	ref
19.....	71614X2HB.....	Bolt, Hex - 7/16 NC x 2.....	2
20.....	716LW.....	Washer, Lock - 7/16.....	2
21.....	71614HN.....	Nut, Hex - 7/16 NC.....	2

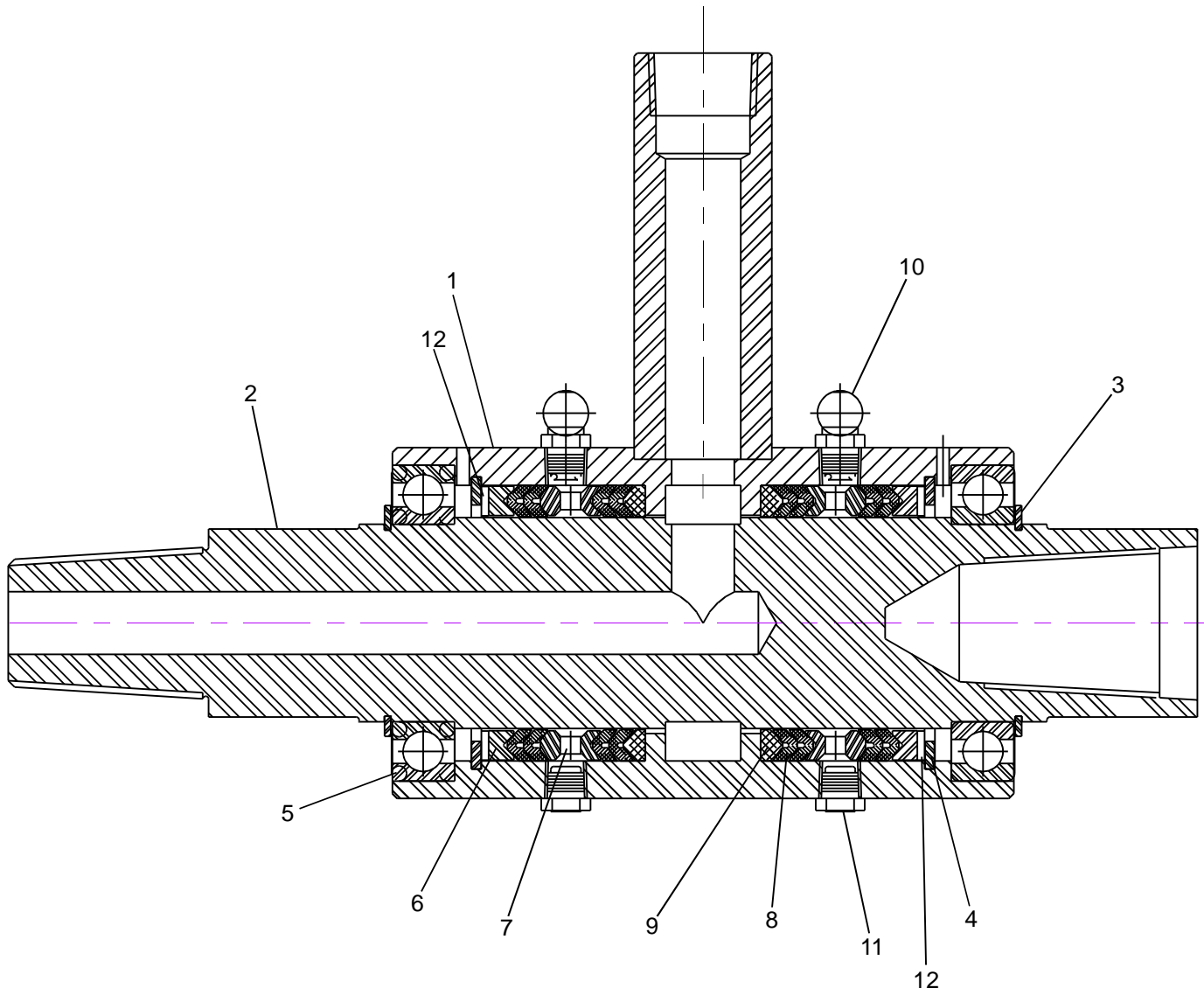
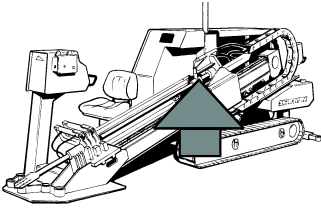
Carriage Shaft Assembly



Carriage Shaft Assembly Parts List

<u>Item</u>	<u>Part Number</u>	<u>Description</u>	<u>Qty</u>
1.....	236-2776-04.....	Sub, Saver.....	1
2.....	236-7232-04.....	Swivel, Mud.....	1
3.....	236-7600-04.....	Shaft, Carriage.....	1
4.....	236-8223-02.....	Nut, Lock - Shaft.....	2
5.....	236-8224-02.....	Washer, Lock - Shaft.....	1
6.....	236-8315-04.....	Spacer, Bearing.....	1
7.....	236-2778-02.....	Seal, Shaft.....	2
8.....	236-8325-02.....	Cone, Bearing.....	2
9.....	236-8326-02.....	Cup, Bearing.....	2
10.....	236-3726-02.....	Valve, Relief.....	1
11.....	236-8261-04.....	Hub, Bearing.....	1
12.....	236 2198-02.....	Zerk, Grease - 1/4 NF.....	1
13.....	1213X234SHCS.....	Screw, Cap - 1/2 NC x 2 3/4.....	6
14.....	236-8258-04.....	Housing, Rotary.....	1
15.....	5811X134SHCS.....	Screw, Cap - 5/8 NC x 1 3/4.....	4
16.....	236-8208-02.....	Motor, Hydraulic - Rotation.....	1
ref.....	236-9039-02.....	Seal Kit.....	

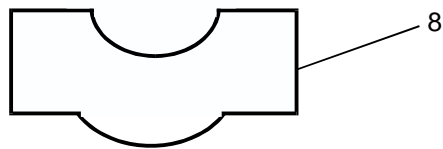
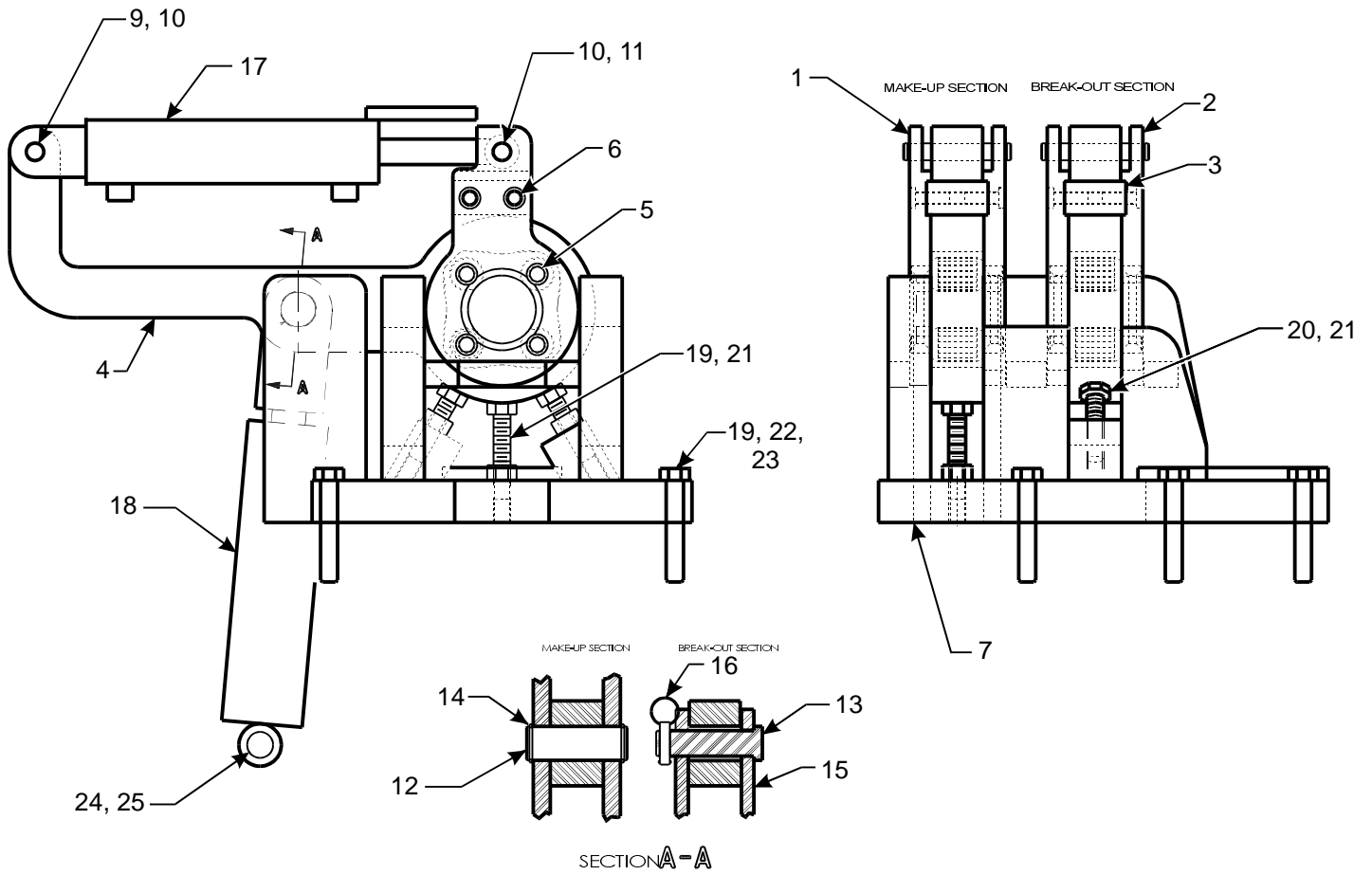
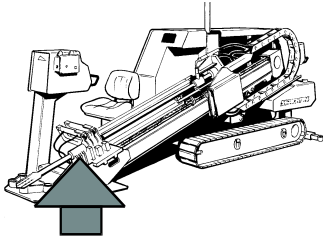
Swivel Assembly



Mud Swivel Assembly Parts List

<u>Item</u>	<u>Part Number</u>	<u>Description</u>	<u>Qty</u>
1.....	236-2715-04.....	Housing, Swivel.....	1
2.....	236-7231-04.....	Stem, Swivel.....	1
3.....	236-2724-02.....	Ring, Retaining - External.....	2
4.....	236-2723-02.....	Ring, Retaining - Internal.....	2
5.....	236-2722-02.....	Bearing, Radial.....	2
6.....	236-2721-02.....	Seat Ring.....	2
7.....	236-2720-02.....	Grease Ring.....	2
8.....	236-2725-02.....	Vee Ring.....	8
9.....	236-2726-02.....	Adapter Ring.....	2
10.....	701-126-02.....	Zerk, Grease - 90 degree x 1/8 NPT.....	2
11.....	236-3726-02.....	Valve, Relief.....	2
12.....	236-9331-04.....	Shim.....	2
ref.....	236-6268-04.....	Swivel Repair Kit.....	ref
item 4.....	236-2723-02.....	Ring, Retaining - Internal.....	2
item 3.....	236-2724-02.....	Ring, Retaining - External.....	2
item 8.....	236-2725-02.....	Vee Ring.....	8
item 9.....	236-2726-02.....	Adapter Ring.....	2

Power Wrench Assembly

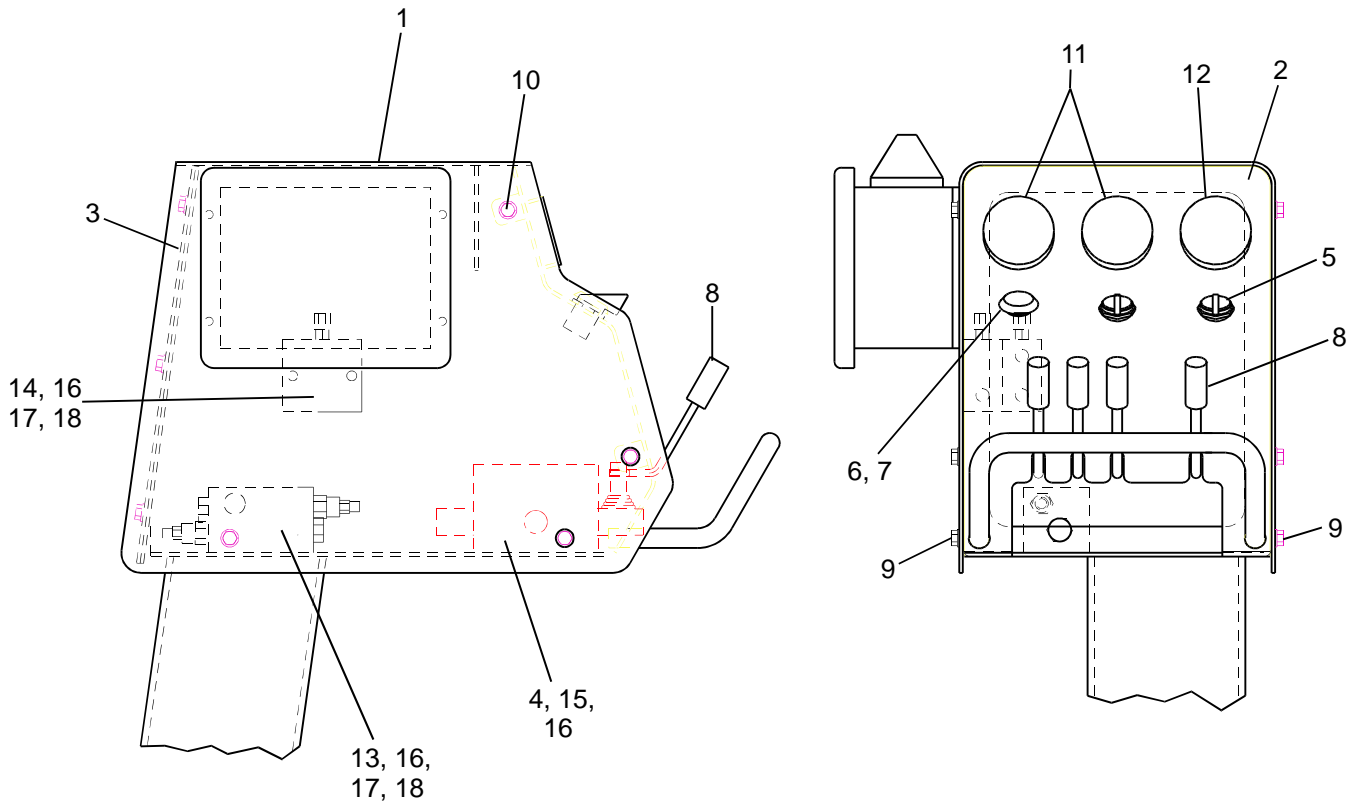
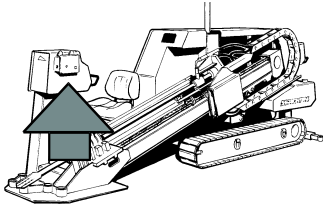


Power Wrench Assembly Parts List

<u>Item</u>	<u>Part Number</u>	<u>Description</u>	<u>Qty</u>
1.....	236-7623-04.....	Arm, Wrench.....	2
2.....	236-7638-04.....	Arm, Wrench.....	2
3.....	236-7639-04.....	Center, Arm.....	2
4.....	236-7622-04.....	Body, Wrench.....	2
5.....	236-7934-04.....	Gear, Wrench.....	8
6.....	236-7925-04.....	Screw, Cap - 3/8 NC x 1 Socket Head.....	8
7.....	236-7629-04.....	Base, Wrench.....	1
8.....	236-7624-04.....	Guide, Pipe.....	1
9.....	236-4425-04.....	Pin, Grip Cylinder - Barrel End.....	2
10.....	236-7923-04.....	Pin, Grip Cylinder - Rod End.....	2
11.....	701-632-02.....	Ring, Retaining - 1/2"	8
12.....	236-7743-04.....	Pin, Wrench - Make Up.....	1
13.....	236-0317-04.....	Pin, Wrench - Break Out.....	1
14.....	236-3684-02.....	Ring, Retaining.....	2
15.....	236-0310-04.....	Clevis, Cylinder.....	1
16.....	701-610-02.....	Pin, Ring.....	1
17.....	236-4430-02.....	Cylinder, Hydraulic.....	2
ref.....	236-5949-02.....	Seal Kit.....	ref
18.....	202-552-02.....	Cylinder, Hydraulic.....	1
ref.....	236-5942-02.....	Seal Kit.....	ref
19.....	1213X212HB.....	Bolt, Hex - 1/2 NC x 2 1/2.....	7
20.....	1213X112HB.....	Bolt, Hex - 1/2 NC x 1 1/2.....	2
21.....	1213HJN.....	Nut, Jam - 1/2.....	3
22.....	1213HN.....	Nut, Hex - 1/2 NC.....	6
23.....	12LW.....	Washer, Lock - 1/2.....	6
* 24.....	236-316-04.....	Pin, Cylinder - Break Out.....	1
* 25.....	701-630-02.....	Ring, Retaining.....	2
* 26.....	236-7679-04.....	Guide, Drill Pipe - Main.....	1

* items not illustrated

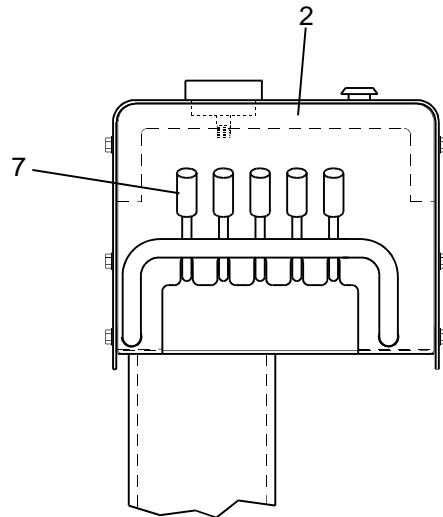
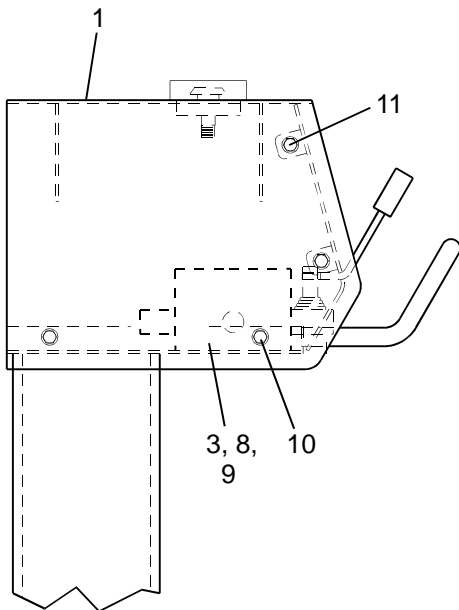
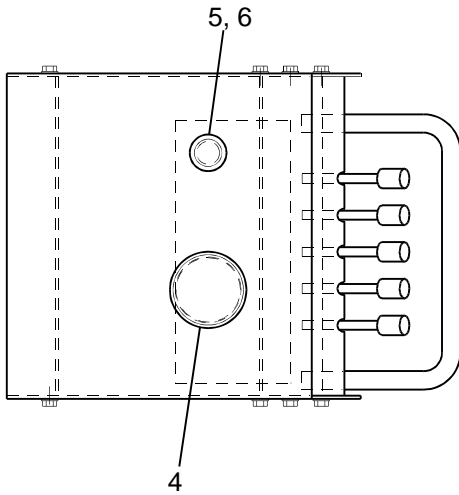
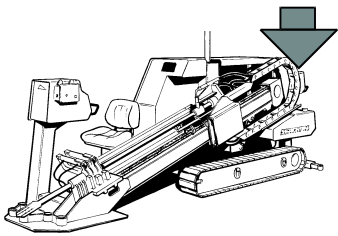
Control Panel Assembly - Front



Control Panel Assembly - Front Parts List

<u>Item</u>	<u>Part Number</u>	<u>Description</u>	<u>Qty</u>
1.....	236-8510-04.....	Box, control.....	1
2.....	236-8473-04.....	Panel, Control.....	1
ref.....	236-8686-02.....	Decal, Panel.....	ref
3.....	236-8531-04.....	Cover, Rear.....	1
4.....	236-8200-02.....	Valve, Hydraulic - Main Control.	1
ref.....	236-6539-02.....	Spring Return Kit.....	ref
ref.....	236-6965-02.....	O'Ring, Seal - Spool.....	ref
ref.....	236-6966-02.....	Ring, Back Up - Spool Seal.....	ref
ref.....	120427.....	Thrust Relief Port.....	ref
ref.....	236-7297-02.....	Rotation / Breakout Wrench Relief Port.....	ref
5.....	236-5432-02.....	Switch, Selector.....	2
6.....	236-8211-02.....	Switch, Shutdown.....	1
7.....	203-193-02.....	Operator, Switch.....	1
8.....	236-8662-02.....	Handle, Valve.....	4
9.....	51618X12WHB.....	Bolt, Hex - 5/16 NC x 1/2.....	2
10.....	51618X34WHB.....	Bolt, Hex - 5/16 NC x 3/4.....	12
11.....	236-4091-02.....	Gauge, Hydraulic - 0 - 5,000 PSI.....	2
12.....	236-9055-02.....	Gauge, Hydraulic - 0 - 2,000 PSI.....	1
13.....	236-7974-02.....	Valve, Sequence.....	1
14.....	236-2931-02.....	Valve, Check.....	2
15.....	8MMX20MMHB.....	Bolt, Hex - 8 MM x 20 MM.....	4
16.....	516LW.....	Washer, Lock - 5/16.....	8
17.....	51618X334HB.....	Bolt, Hex - 5/16 NC x 3 3/4.....	4
18.....	51618HN.....	Nut, Hex - 5/16 NC.....	4

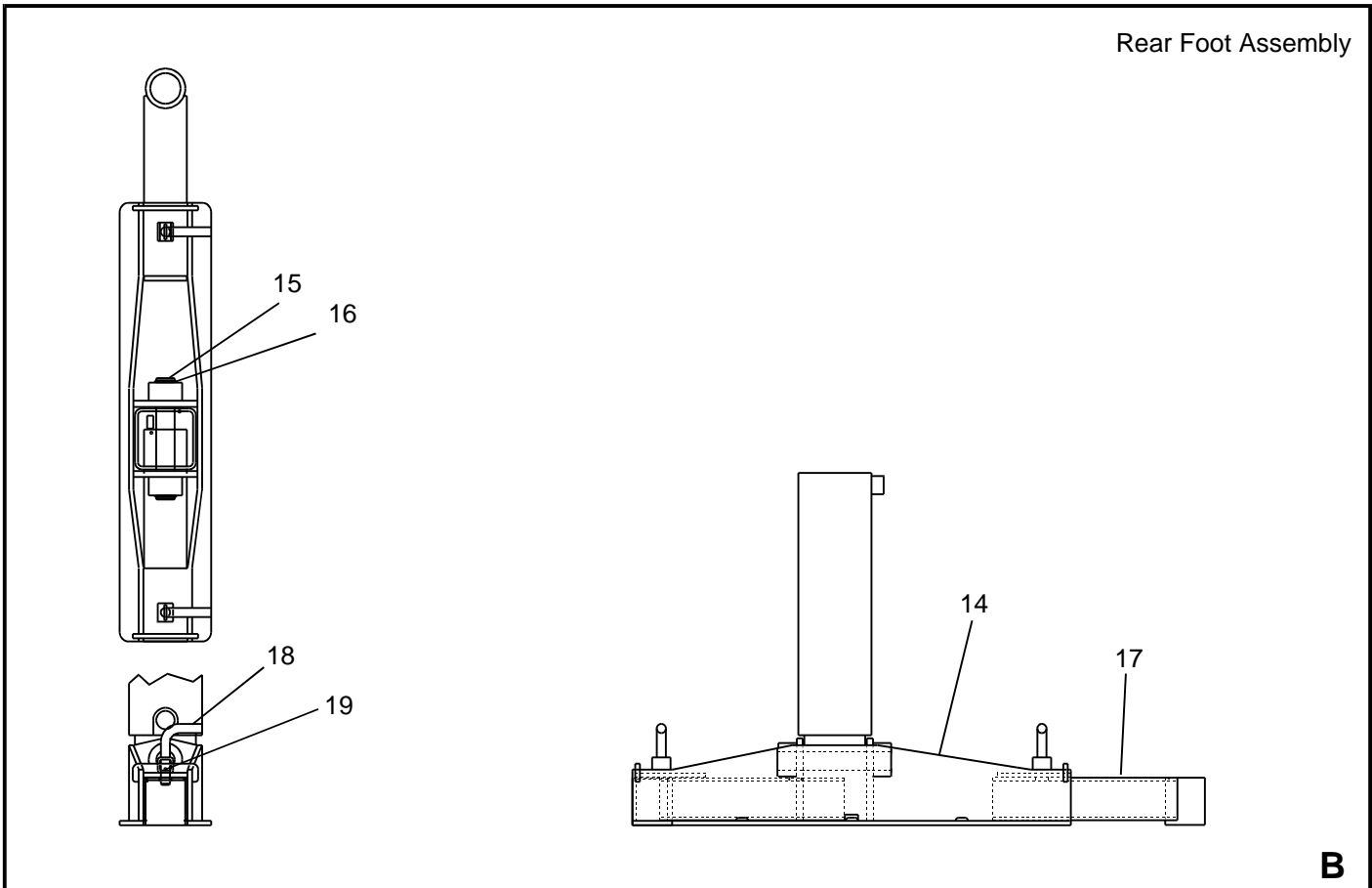
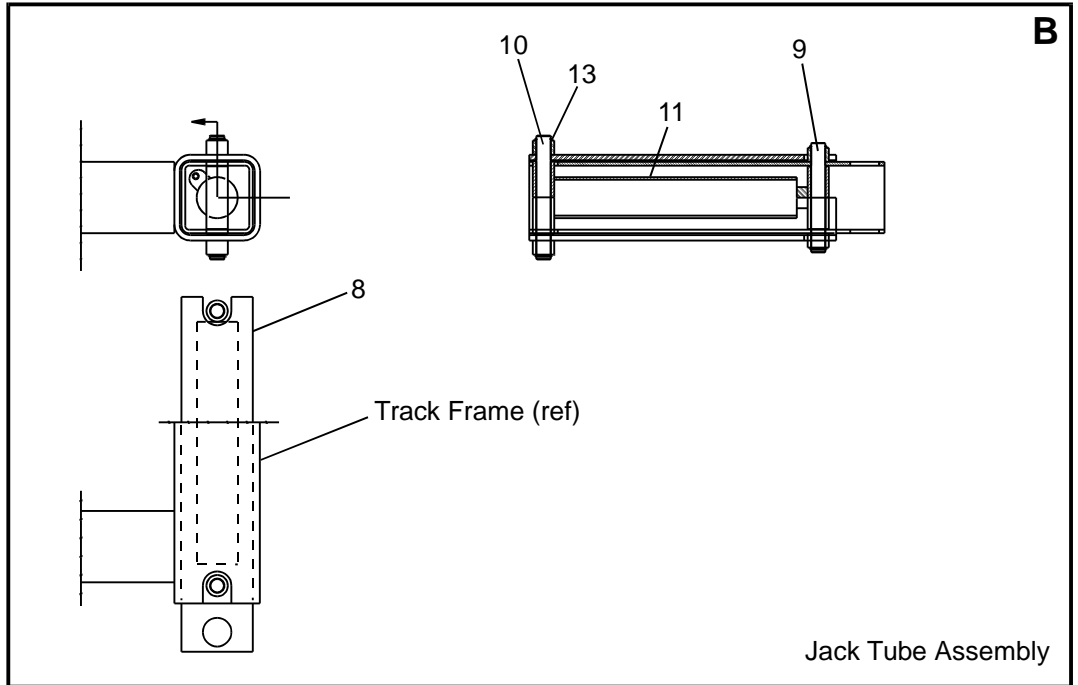
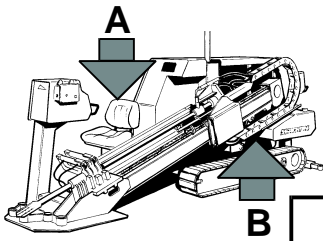
Control Panel Assembly - Rear



Control Panel Assembly - Rear Parts List

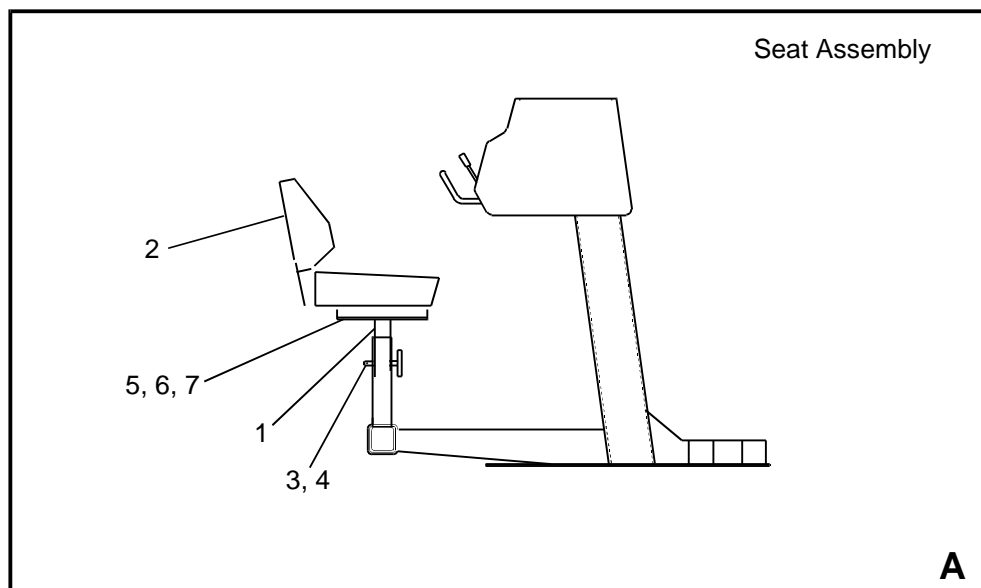
<u>Item</u>	<u>Part Number</u>	<u>Description</u>	<u>Qty</u>
1.....	236-8593-04.....	Box, Control.....	1
2.....	236-8599-04.....	Panel, Control.....	1
ref.....	236-8687-02.....	Decal, Panel - Rear.....	ref
3.....	236-8198-02.....	Valve, Hydraulic - Rear Control.....	1
4.....	236-6539-02.....	Spring Return Kit.....	ref
ref.....	236-6965-02.....	O'Ring, Seal - Spool.....	ref
ref.....	236-6966-02.....	Ring, Back Up - Spool Seal.....	ref
ref.....	236-4091-02.....	Gauge, Hydraulic - 0 - 5,000 PSI.....	1
ref.....	120247.....	Main Relief.....	ref
ref.....	236-7297-02.....	Auxiliary Relief.....	ref
5.....	236-8211-02.....	Switch, Shutdown.....	1
6.....	203-193-02.....	Operator, Switch.....	1
7.....	236-8662-02.....	Handle, Valve.....	5
8.....	8MMX20MMHB.....	Bolt, Hex - 8 MM x 20 MM.....	4
9.....	516LW.....	Washer, Lock - 5/16.....	4
10.....	51618X12WHB.....	Bolt, Hex - 5/16 NC x 1/2.....	1
11.....	51618X34WHB.....	Bolt, Hex - 5/16 NC x 3/4.....	7

Rear Foot / Seat Assembly

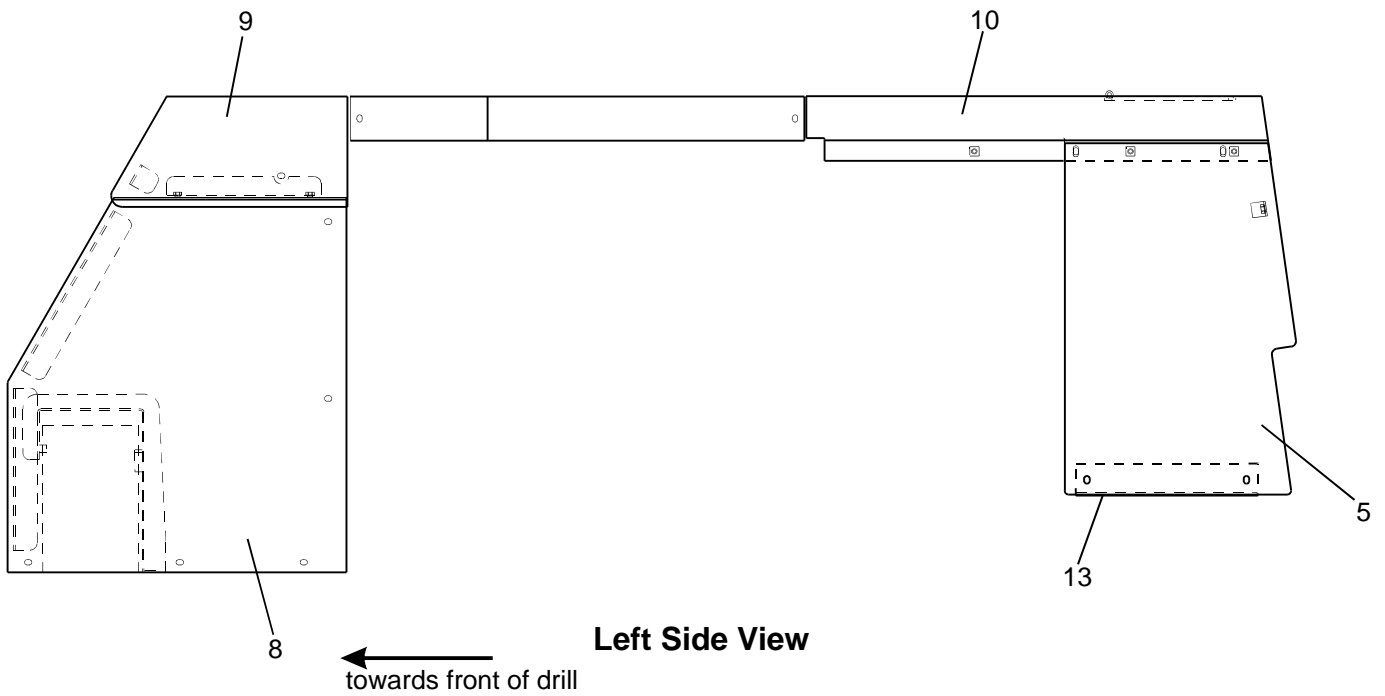
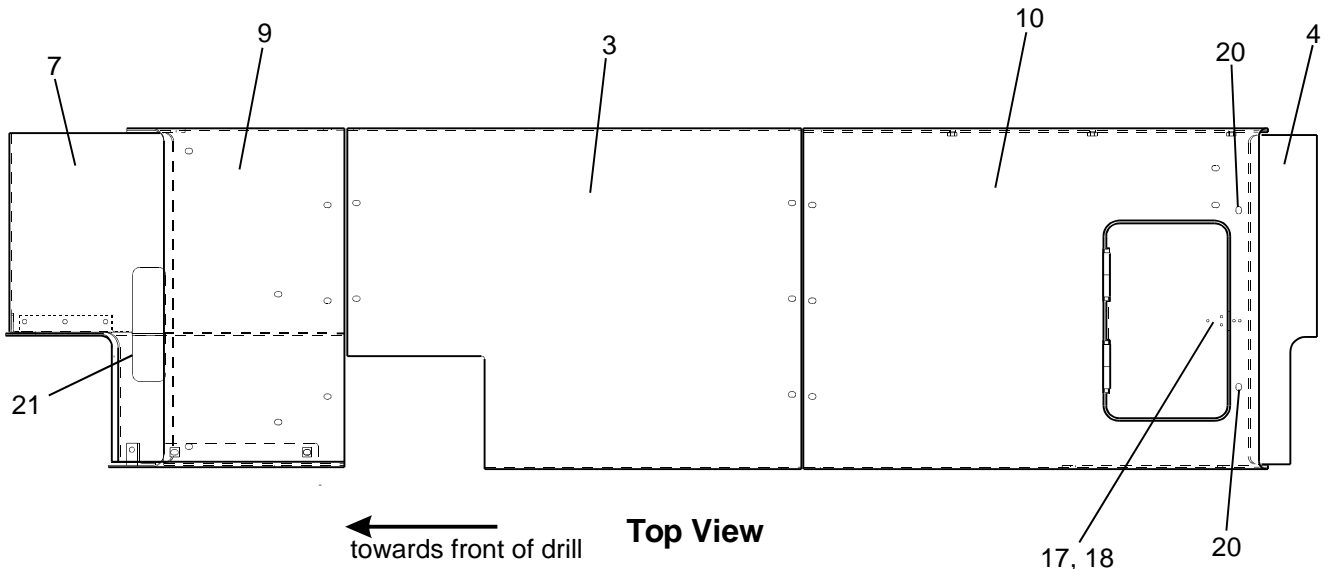
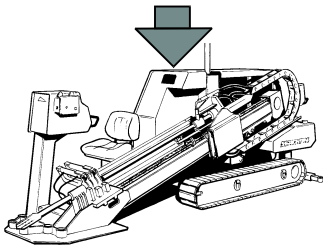


Rear Foot / Seat Assembly Parts List

<u>Item</u>	<u>Part Number</u>	<u>Description</u>	<u>Qty</u>
1.....	236-8611-04.....	Mount, Seat.....	1
2.....	236-8674-02.....	Seat.....	1
3.....	701-212-02.....	Pin, Lock.....	1
4.....	236-4189-04.....	Pin, Tee.....	1
5.....	51618X34HB.....	Bolt, Hex - 5/16 NC x 3/4.....	4
6.....	51618HN.....	Nut, Hex - 5/16 NC.....	4
7.....	516LW.....	Washer, Lock - 5/16.....	4
8.....	236-8369-03.....	Tube, Jack.....	1
9.....	236-7642-04.....	Pin - Jack - Lower.....	1
10.....	236-7643-04.....	Pin, Jack - Upper.....	1
11.....	236-7245-02.....	Cylinder, Hydraulic - Jack Tube.....	1
12.....	236-9347-02.....	Seal Kit.....	ref
13.....	236-3684-02.....	Ring, Retaining.....	4
14.....	236-8391-04.....	Foot, Rear.....	1
15.....	236-7644-04.....	Pin, Foot.....	1
16.....	236-6891-02.....	Ring, Retaining.....	2
17.....	236-8395-02.....	Arm, Extension.....	2
18.....	236-8399-04.....	Pin, Arm.....	2
19.....	236-8400-02.....	Pin Spring - 3/16 x 1.....	2

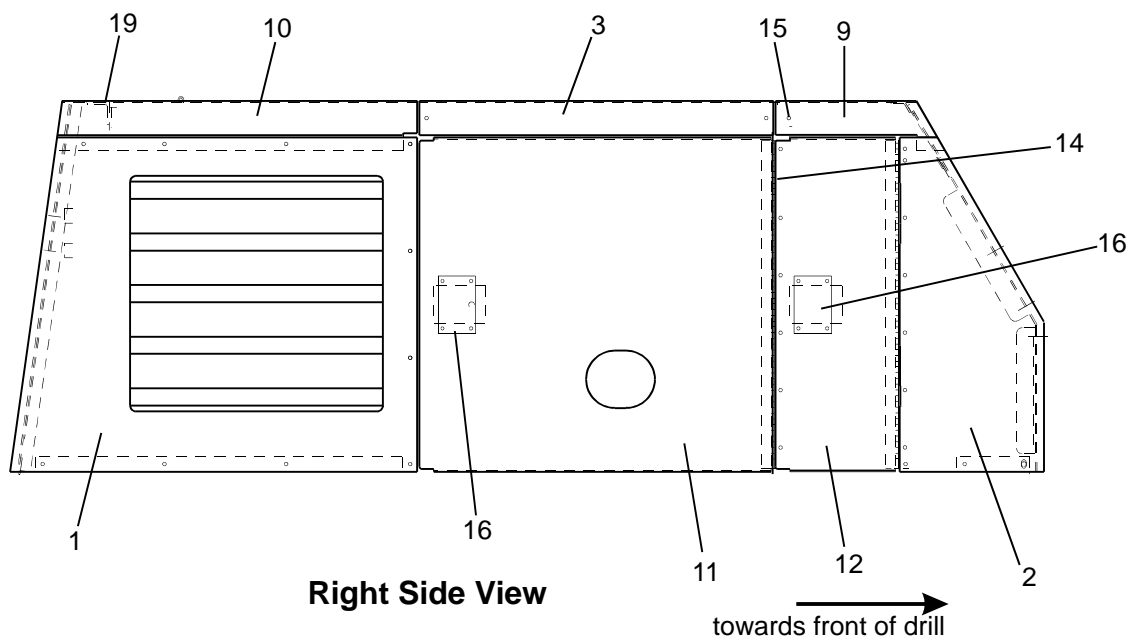


Cowling Assembly

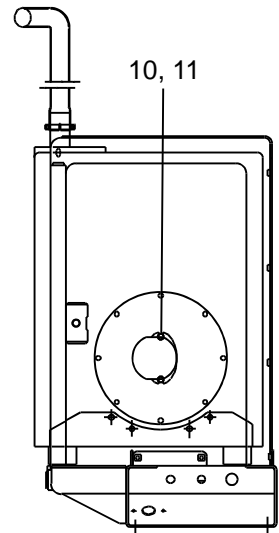
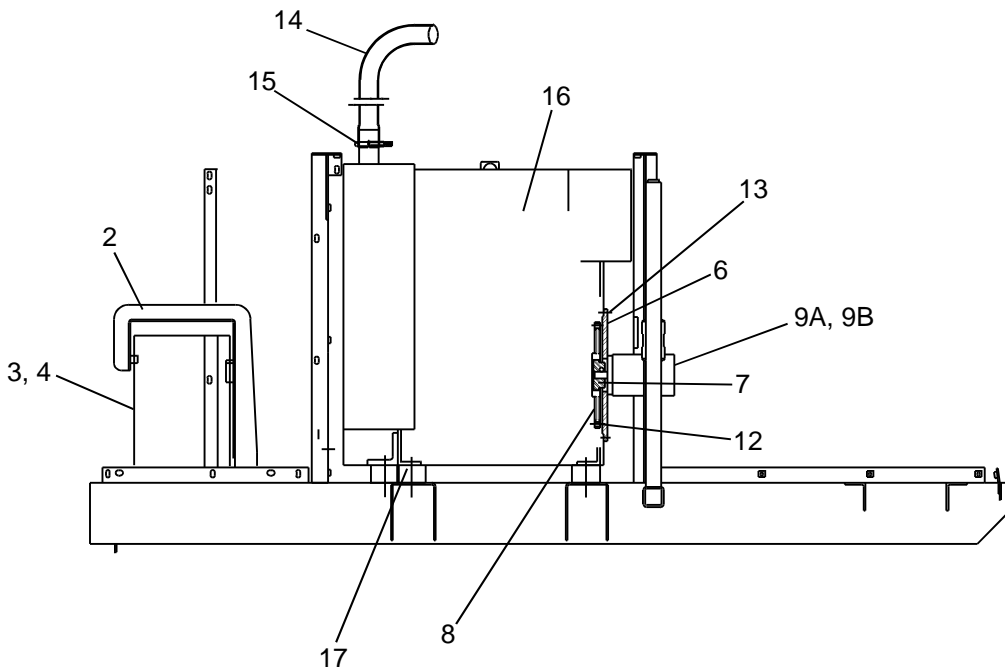
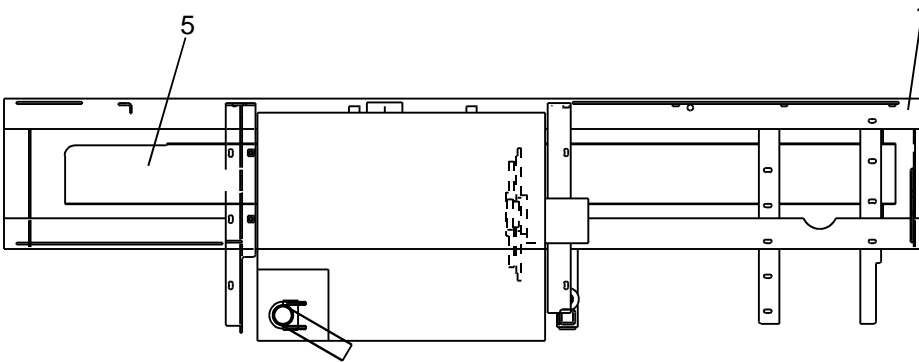
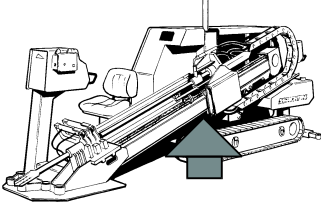


Cowling Assembly Parts List

<u>Item</u>	<u>Part Number</u>	<u>Description</u>	<u>Qty</u>
1.....	236-8564-04.....	Grill, Cooler.....	1
2.....	236-8941-04.....	Panel, Side - Front.....	1
3.....	236-8640-04.....	Cover, Engine.....	1
4.....	236-8639-04.....	End, Cowling - Rear.....	1
5.....	236-8663-04.....	Panel, Side - Left Rear.....	1
6.....	236-8643-03.....	Bracket, Anchor.....	1
7.....	236-8623-03.....	End, Cowling - Front.....	1
8.....	236-8630-04.....	Panel, Side - Left Front.....	1
9.....	236-8632-04.....	Top, Cowling - Front.....	1
10.....	236-8668-04.....	Top, Cowling - Rear.....	1
11.....	236-8942-04.....	Door, Engine.....	1
12.....	236-8947-04.....	Door, Tool Box.....	1
13.....	236-8647-04.....	Support, Cowling.....	1
14.....	236-8655-04.....	Bulkhead, Tool Box.....	1
15.....	236-8656-04.....	Mount, Panel - Engine.....	1
16.....	236-8705-02.....	Latch, Flush - Sliding.....	2
17.....	236-8706-02.....	Latch, Rod - Style.....	2
18.....	236-8707-02.....	Keeper, Rod - Style.....	1
19.....	236-8649-04.....	Mount, Cowling.....	1
20.....	236-9028-04.....	Angle, Top.....	2
21.....	701-013-02.....	Protector, Edge.....	5.5'



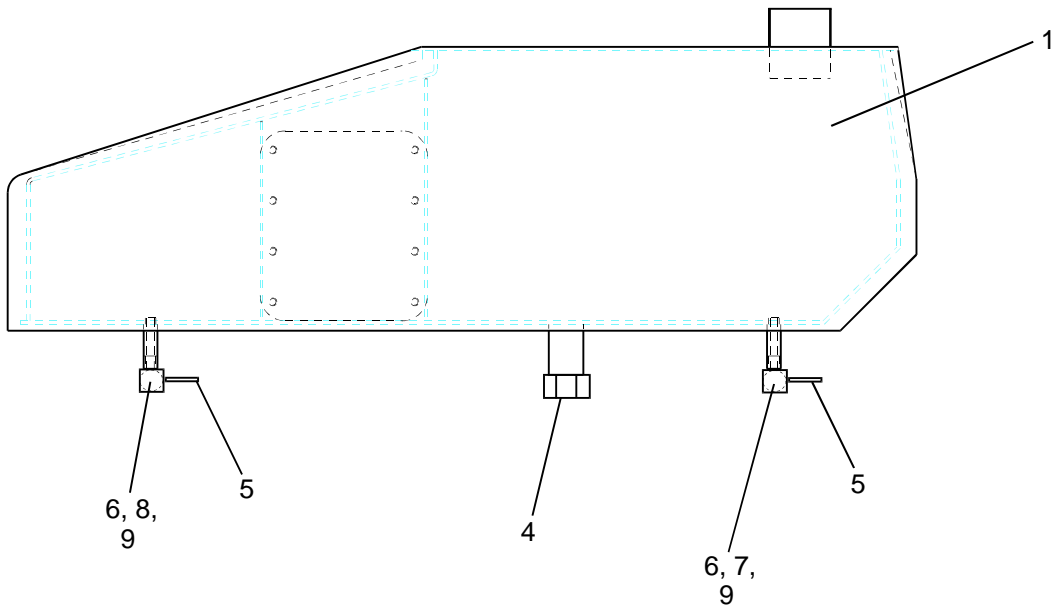
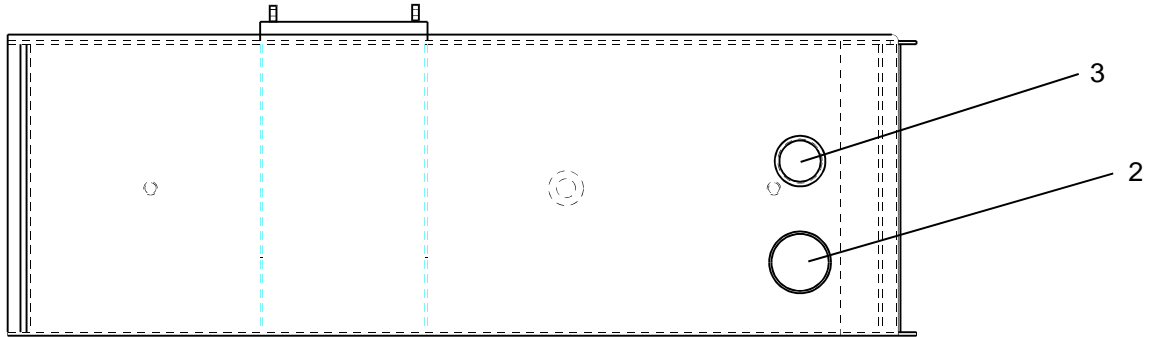
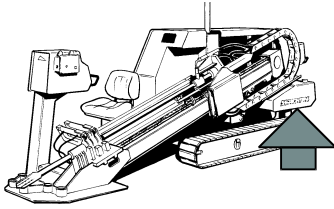
Engine Assembly



Engine Assembly Parts List

<u>Item</u>	<u>Part Number</u>	<u>Description</u>	<u>Qty</u>
1.....	236-8470-04.....	Engine, Mount.....	1
2.....	236-8657-04.....	Holder, Battery.....	1
3.....	206-113-04.....	Hold Down, Battery.....	1
4.....	236-9224-02.....	Battery, 12V - 770 CCA.....	1
5.....	236-8486-03.....	Floor, Box.....	1
6.....	236-8202-02.....	Plate, Mount - Pump.....	1
7.....	236-8203-02.....	Hub.....	1
8.....	236-8204-02.....	Flange, Nylon.....	1
9A.....	236-8201-02.....	Pump, Hydraulic - Commercial.....	1
ref.....	236-9374-02.....	Seal Kit.....	ref
9B.....	236-8695-02.....	Pump, Hydraulic - Barnes.....	1
ref.....	236-9375-02.....	Seal Kit.....	ref
10.....	3816X1HB.....	Bolt, Hex - 3/8 NC x 1.....	2
11.....	38LW.....	Washer, Lock - 3/8.....	2
12.....	236-8708-02.....	Screw, Cap - 10 MM x 25 MM.....	6
13.....	236-8709-02.....	Bolt, Hex - 10MM x 25 MM.....	8
14.....	236-9260-02.....	Tailpipe, Engine.....	1
15.....	236-9261-02.....	Clamp, Muffler.....	1
16.....	236-8685-04.....	Engine, Hatz - Modified.....	1
17.....	236-9024-02.....	Mount, Motor - Rubber.....	ref
ref.....	236-9350-02.....	Pre-filter, Fuel.....	ref
ref.....	236-4576-02.....	Fuel Filter.....	ref
ref.....	236-4577-02.....	Oil Filter.....	ref
ref.....	236-4578-02.....	Air Filter.....	ref

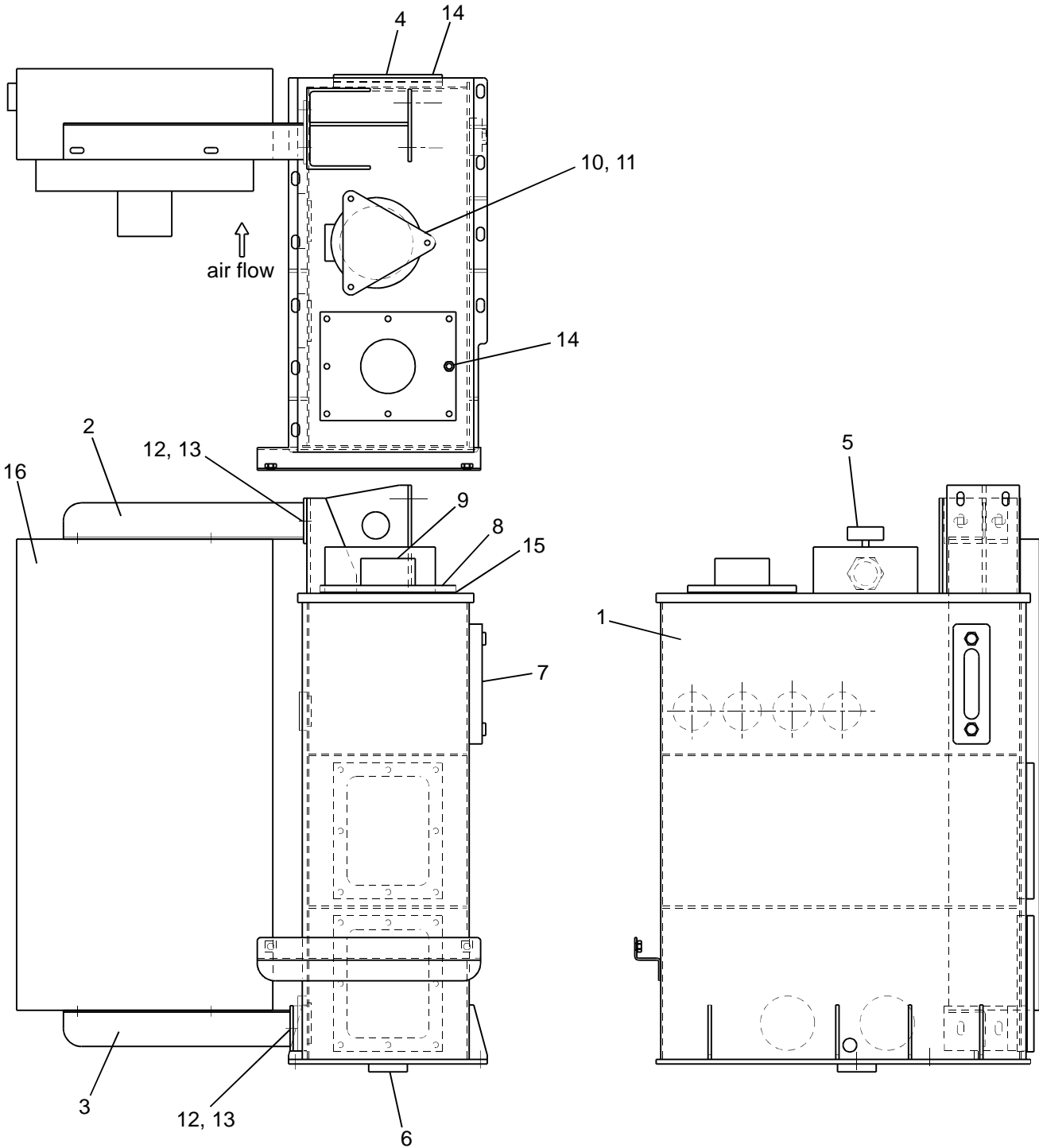
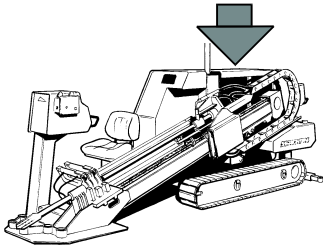
Fuel Tank Assembly



Fuel Tank Parts List

<u>Item</u>	<u>Part Number</u>	<u>Description</u>	<u>Qty</u>
1.....	236-8336-04.....	Tank, Fuel.....	1
2.....	202-425-02.....	Cap. Fuel.....	1
3.....	236-2468-02.....	Gauge, Fuel.....	1
4.....	202-262-02.....	Plug, 3/4 NPT.....	1
5.....	236-3074-02.....	Valve, Fuel.....	2
6.....	202-231-02.....	Fitting, 4 MP - 4FP90.....	2
7.....	202-293-02.....	Fitting, Hose - 1/4 MP x 3/16.....	1
8.....	202-294-02.....	Fitting, Hose - 1/4 MP x 5/16.....	1
9.....	701-404-02.....	Clamp, Hose - #4.....	4
ref.....	706-102-02.....	Line, Fuel - 5/16".....	40"
ref.....	706-104-02.....	Hose, Low Pressure - 1/4".....	55"

Hydraulic Tank Assembly

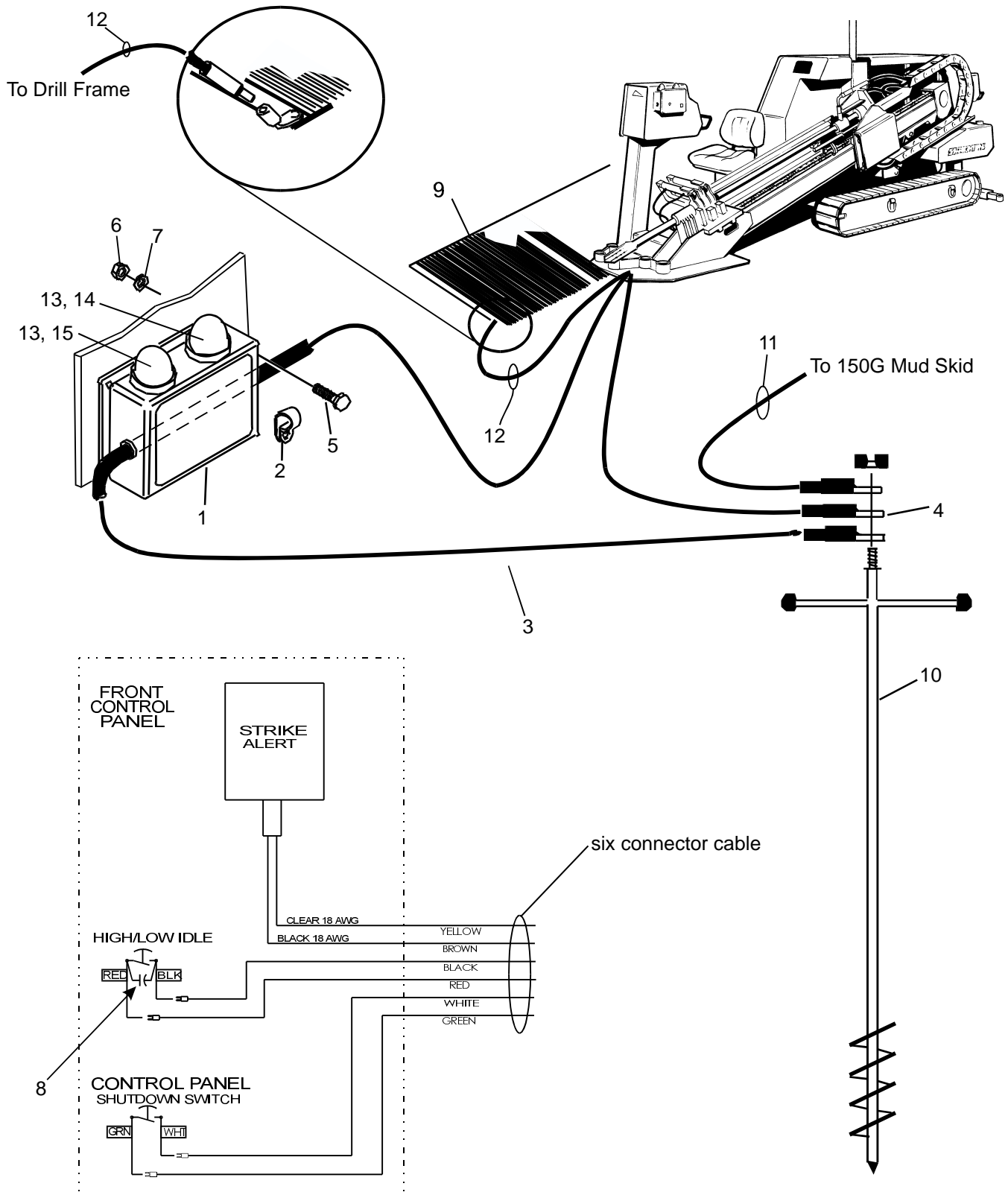


Hydraulic Tank Parts List

<u>Item</u>	<u>Part Number</u>	<u>Description</u>	<u>Qty</u>
1.....	236-8425-04.....	Tank, Hydraulic.....	1
2.....	236-8426-04.....	Mount, cooler - Upper.....	1
3.....	236-8427-04.....	Mount, Cooler - Lower.....	1
4.....	236-4929-04.....	Cover Tank.....	2
5.....	236-8417-02.....	Gauge, Filter.....	1
6.....	236-4931-02.....	Plug, Magnetic.....	1
7.....	202-400-02.....	Gauge, Sight.....	1
8.....	236-4949-04.....	Cover, Tank.....	1
9.....	202-405-02.....	Cap, Filler.....	1
10.....	236-8209-02.....	Filter, Return.....	1
11.....	236-8210-02.....	Element, Filter.....	1
12.....	51618X34WHB.....	Bolt, Hex - 5/16 NC x 3/4.....	4
13.....	51618WHN.....	Nut, Hex - 5/16 NC.....	2
14.....	51618X1WHB.....	Bolt, Hex - 5/16 NC x 1.....	24
15.....	236-4930-02.....	Gasket.....	3
16.....	236-8455-04.....	Cooler, Oil.....	1
ref.....	236-5841-02.....	Fuseholder.....	ref
ref.....	236-5842-02.....	25 Amp Fuse.....	ref
ref.....	236-7004-02.....	Motor, Fan - Hayden.....	ref
ref.....	236-7006-02.....	Bracket, Motor.....	ref
ref.....	236-7007-02.....	Blade, Fan.....	ref
ref.....	236-7008-02.....	Guard, Fan.....	ref
ref.....	236-7005-02.....	Coil.....	ref
ref.....	236-9488-02.....	Relay, Controller - Fan.....	ref
ref.....	236-9489-02.....	Switch, Sensor.....	ref

Section 2: Electrical

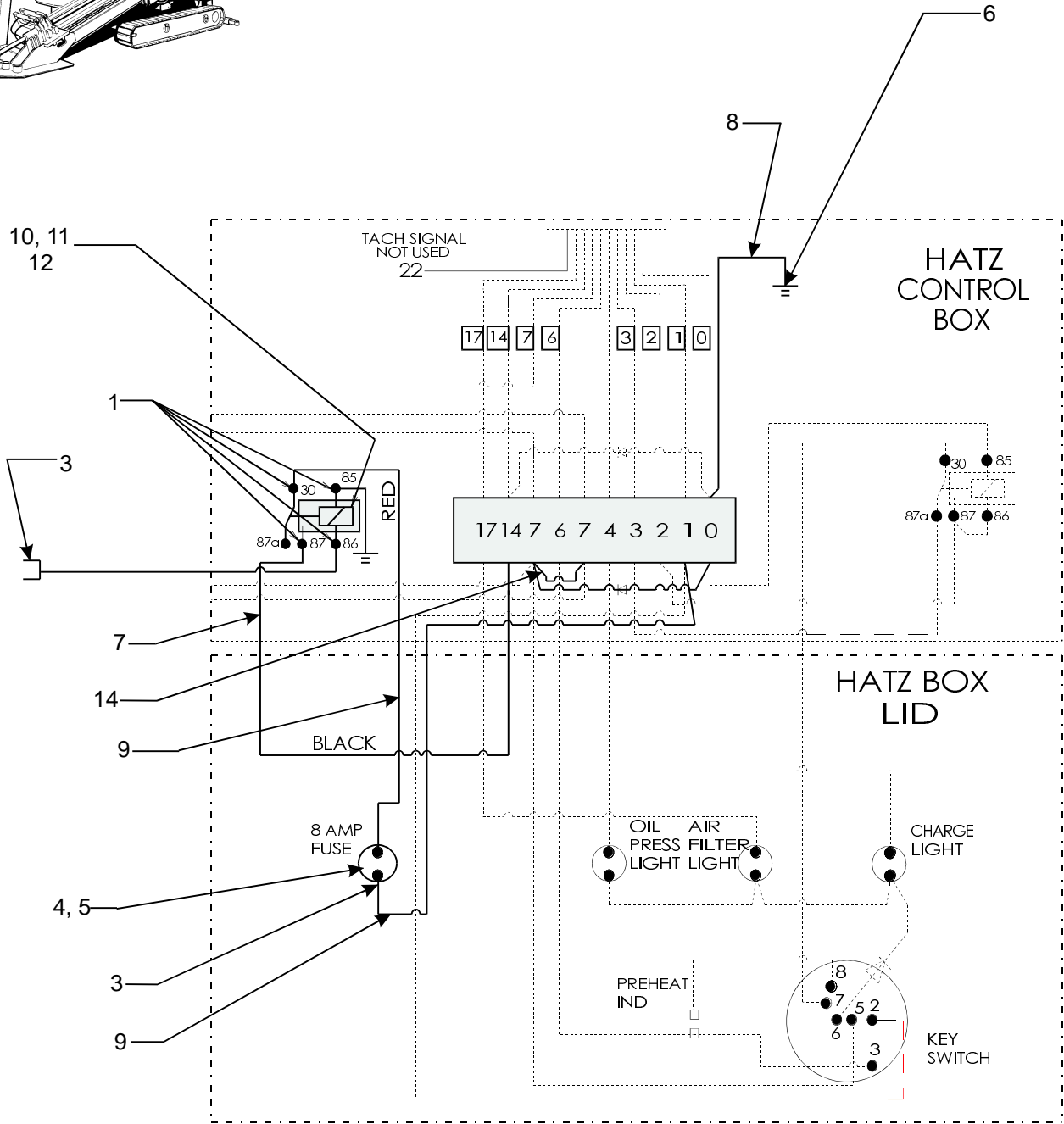
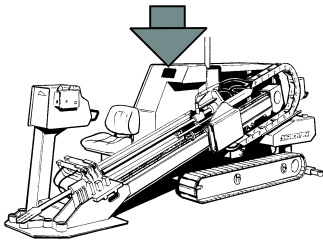
Strike Alert / Grounding Mat



Strike Alert / Grounding Mat Parts List

<u>Item</u>	<u>Part Number</u>	<u>Description</u>	<u>Qty</u>
1.....	236-7254-02.....	Strike Alert.....	1
2.....	705-112-02.....	Clamp.....	1
3.....	236-6261-03.....	Cable, Grounding - 15'.....	1
4.....	101-112-02.....	Lug, Cable.....	2
5.....	1420-X1HB.....	Bolt, Hex 1/4 NC x 1.....	4
6.....	1420HN.....	Nut, Hex - 1/4 NC.....	4
7.....	14LW.....	Washer, Lock - 1/4.....	4
8.....	236-7800-02.....	Capacitor, IMFO.....	1
9.....	236-1815-04.....	Mat, Grounding.....	1
10.....	101-103-02.....	Rod, Grounding.....	1
11.....	101-100-04.....	Cable, Grounding.....	1
ref.....	236-1817-04.....	Stake, Mat.....	4
12.....	236-6264-04.....	Cable, Grounding - 5'.....	1
13.....	236-4100-02.....	Bulb, Light - Strke Alert.....	1
14.....	236-4096-02.....	Lens, Red - Strike Alert.....	1
15.....	236-4097-02.....	Lens, Green - Strike Alert.....	1

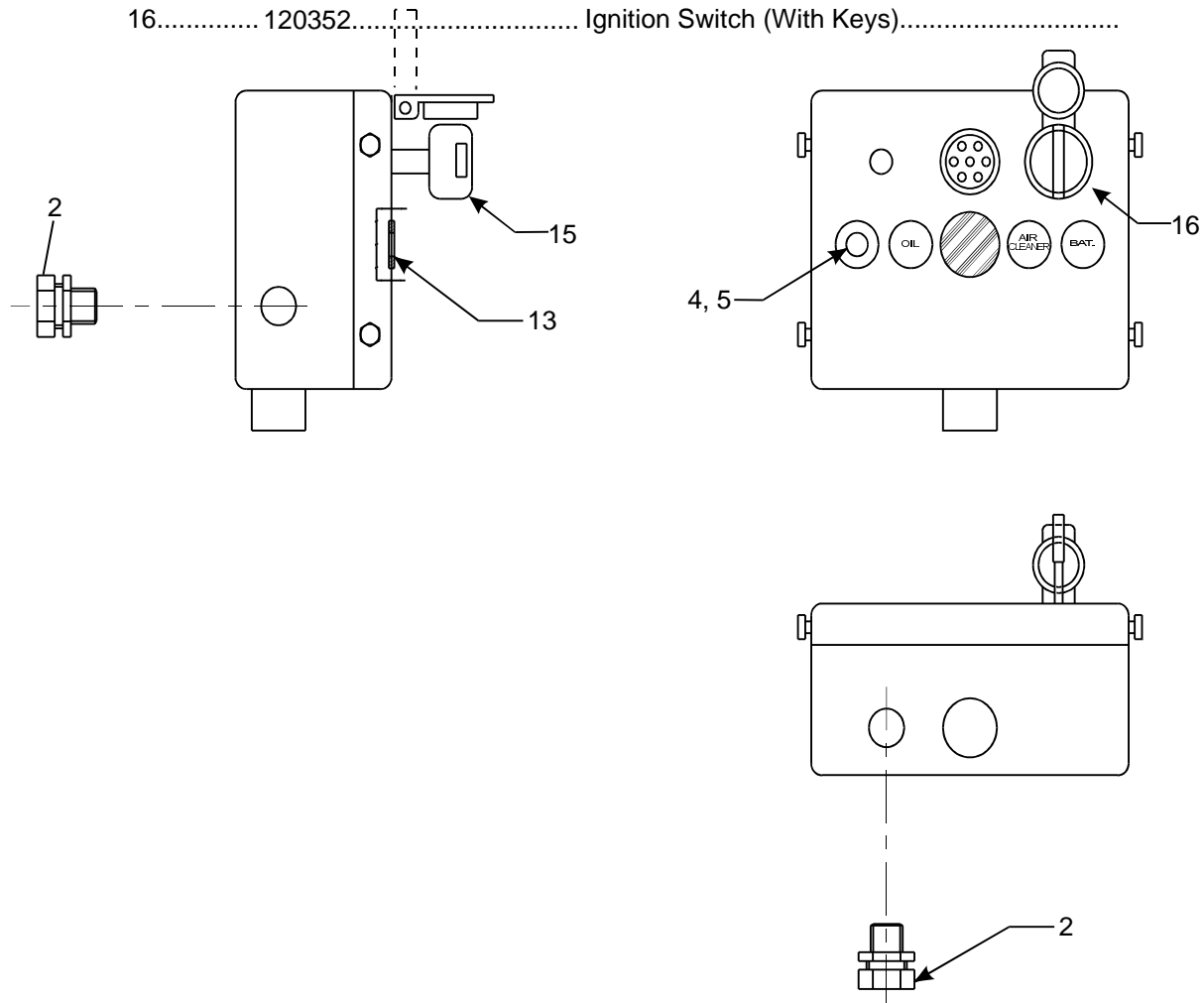
Hatz Box Wiring

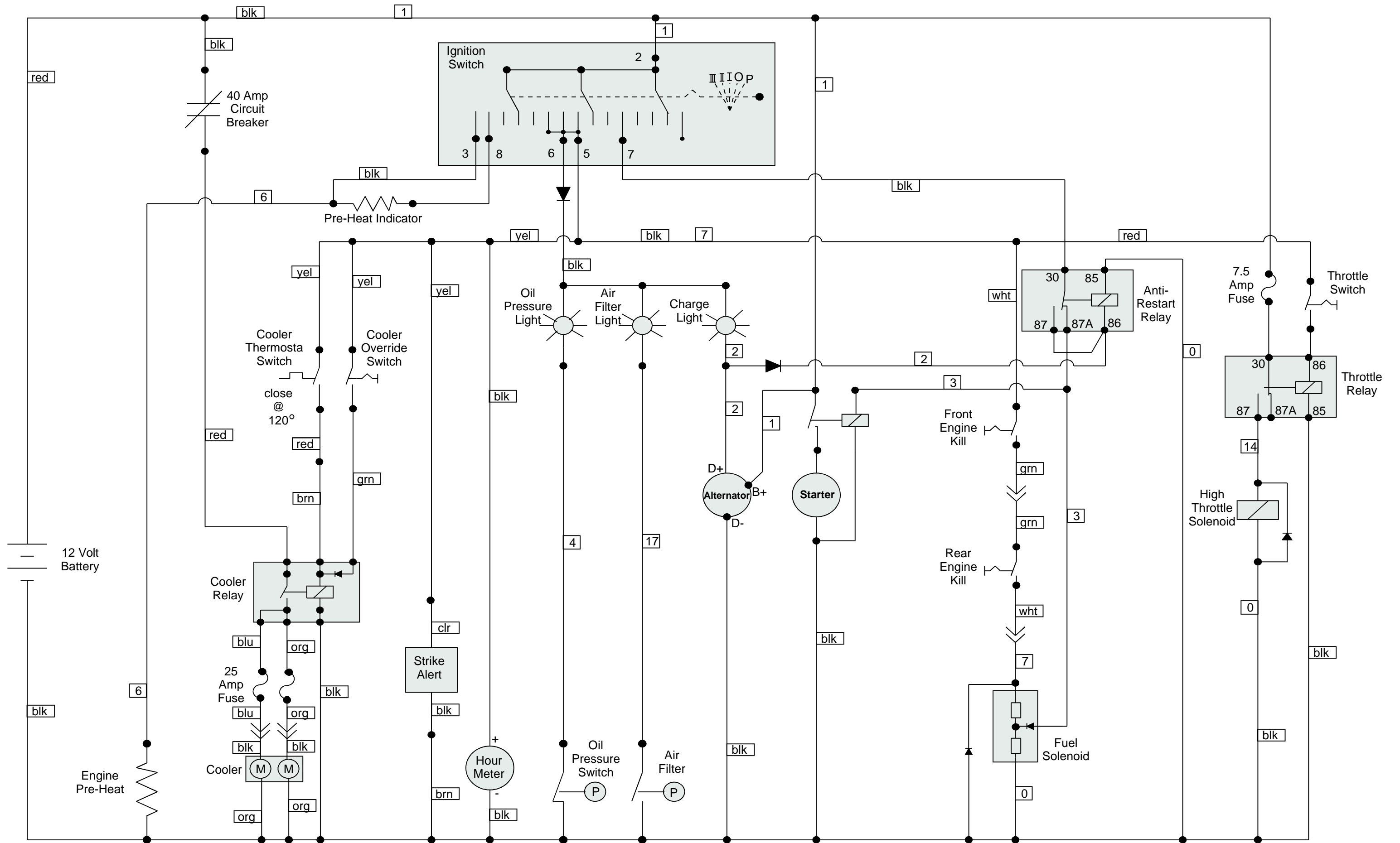


DASHED LINE-EXISTING WIRE
SOLID LINE-ADDED WIRE

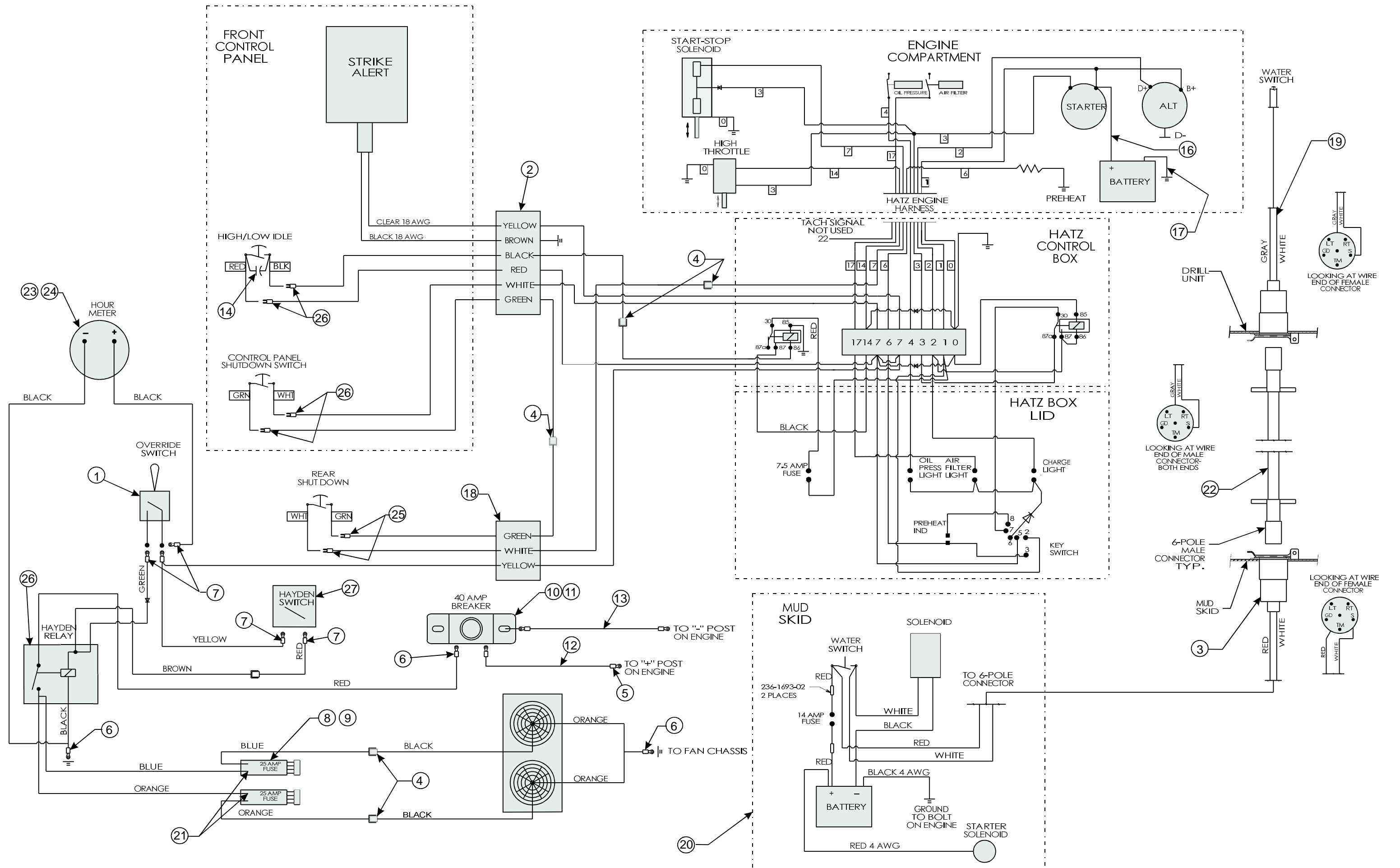
Hatz Box Wiring Parts List

Item	Part Number	Description	Qty
1.....	236-6044-02.....	Terminal, Relay - Female 14 AWG.....	4
2.....	236-8781-02.....	Connector, Strain Relief Cord.....	2
3.....	236-6417-02.....	Terminal, Quick Disconnect - Female.....	3
4.....	236-6138-02.....	Fuseholder.....	1
5.....	236-5591-02.....	Fuse, 7 1/2 amp.....	1
6.....	236-4014-02.....	Terminal, 1/4 ring - 14/16 awg.....	2
7.....	236-1697-02.....	Wire, Black - 14 AWG (8").....	8
8.....	236-1697-02.....	Wire, Black - 14 AWG (14").....	1
9.....	236-1699-02.....	Wire, Red - 14 AWG (14").....	1
10.....	832X12MS.....	Screw, Machine - # 8 NC x 1/2".....	1
11.....	832HN.....	Nut, Hex - # 8 NC.....	1
12.....	8LW.....	Washer Lock - #8.....	1
13.....	236-8783-02.....	Washer, Flat.....	2
14.....	236-1697-02.....	Wire, Black - 14 AWG (3").....	1
15.....	236-9345-02.....	Ignition Key (2).....	ref
16.....	120352.....	Ignition Switch (With Keys).....	





905 Wiring Schematic



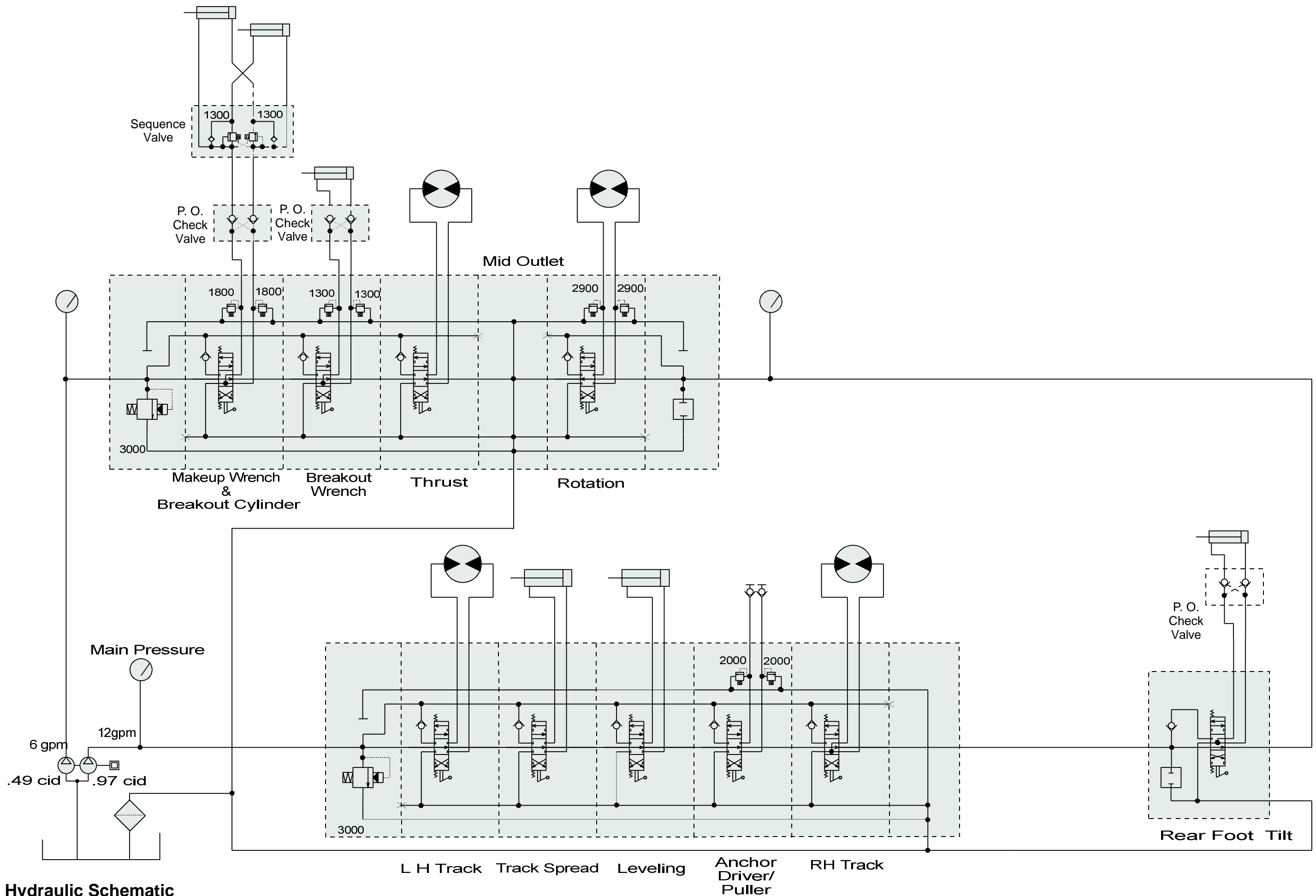
NOTE: ALL WIRES 14 GAUGE UNLESS OTHERWISE SPECIFIED

905 Wiring Assembly Diagram

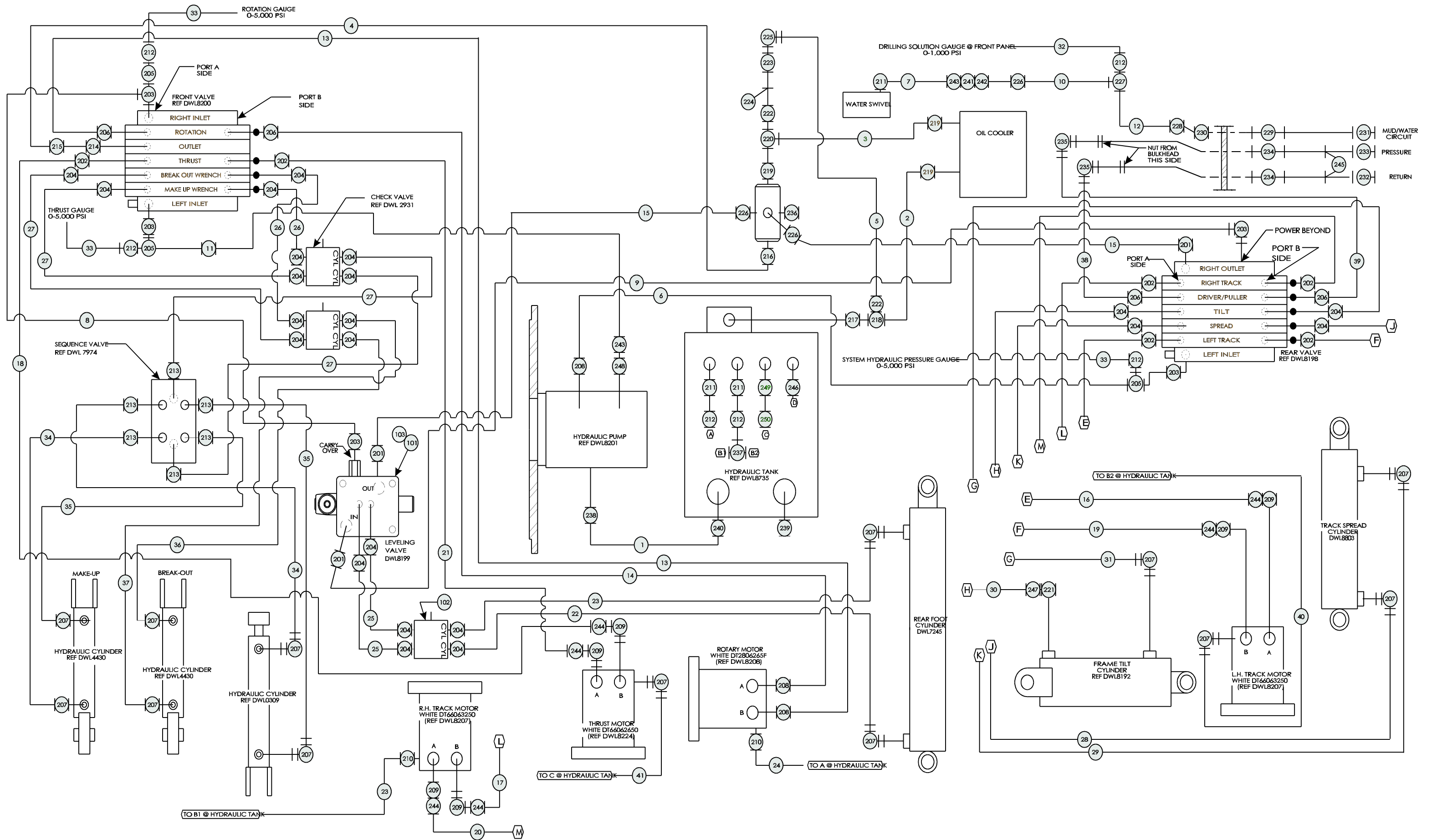
Wiring Assembly Diagram Parts List

<u>Item</u>	<u>Part Number</u>	<u>Description</u>	<u>Qty</u>
1.....	203-197-02.....	Switch, Toggle.....	1
2.....	208-1026-02.....	Cable, Wire - 6 pin 14 AWG.....	1
3.....	203-214-02.....	Connector, 6 pole female.....	1
4.....	236-6416-02.....	Terminal, 1/4 " pin - (10/12 AWG).....	5
5.....	236-8795-02.....	Terminal.....	4
6.....	236-4014-02.....	Terminal, Wire (14/16 AWG w/ 1/4 stud.....	3
7.....	236-1690-02.....	Terminal, Wire (14/16 AWG w/ #10 stud.....	5
8.....	236-5841-02.....	Fuseholder.....	2
9.....	236-5842-02.....	Fuse, 25 amp.....	2
10.....	236-6501-02.....	Breaker, Circuit - Manual Reset 40 amp.....	1
11.....	236-8343-02.....	Bracket, Mounting.....	1
12.....	236-1694-02.....	Wire, Red, 10 AWG (14").....	1
13.....	236-1695-02.....	Wire, Black, 10 AWG (14").....	1
14.....	236-7800-02.....	Capacitor, 1 mfd.....	1
15.....	236-8363-02.....	Wiring, Cooling Fan - Hayden.....	1
16.....	236-8717-02.....	Battery Cable, Positive.....	1
17.....	236-8718-02.....	Battery Cable, Negative.....	1
18.....	236-8751-02.....	Wire, Harness - 905 rear.....	1
19.....	236-8771-02.....	Cable, Water Switch (18").....	1
20.....	236-8775-02.....	Electrical, Assembly.....	1
21.....	236-8784-02.....	Terminal, Fuse - Auto.....	2
22.....	203-919-04.....	Cable, Umbilical - (100').....	1
23.....	236-8787-02.....	Meter, Hour.....	1
24.....	236-8780-04.....	Bracket, Meter - Hour.....	1
25.....	236-6003-02.....	Terminal, Block Spade - #6, (14/16 AWG).....	6
26.....	236-9488-02.....	Relay, Controller - Fan.....	1
27.....	236-9489-02.....	Switch, Sensor.....	1

Section 3: Hydraulic



905 Hydraulic Schematic



Hydraulic Assembly Parts List

Item	Part Number	Description	Qty	Item	Part Number	Description	Qty
1	236-9087-04	Hose, 16 -16FJX, 16-16FJX 90L x 22"	1	201	202-946-02	Adapter, 8MB-8MJ	3
2	236-9426-04	Hose, 16-16FJX, 16-16FJX x 38"	1	202	202-966-02	Adapter, 6MB-6MJ	6
3	236-9427-04	Hose, 16-16FJX, 16-16FJX x 19"	1	203	202-953-02	Adapter, 8MB-8MJ90	5
4	236-8884-04	Hose, 12-12FJX, 12-12FJX x 210"	1	204	236-2623-02	Adapter, 6MB-4MJ	22
5	236-3278-02	Hose, 12-12FJX, 8-8FJX x 24"	1	205	202-209-02	Adapter, 8MJ-8MJ-8FJXT	3
6	236-8744-04	Hose, 8-8 FJX, 8-8FJX x 52"	1	206	236-1784-02	Adapter, 6MB-8MJ	4
7	236-4373-04	Hose, 8-8FJX, 8-8FJX x 12"	1	207	202-908-02	Adapter, 4MB-4MJ90	14
9	236-8905-02	Hose, 8-8FJX, 8-8FJX x 110"	1	208	202-217-02	Adapter, 12MB-8MJ	3
10	236-8903-04	Hose, 8-8FJX, 8-8FJX x 115"	1	209	202-218-02	Adapter, 12MB-8MJ90	6
11	236-8904-04	Hose, 8-8FJX, 8-8FJX x 203"	1	210	236-1067-02	Adapter, 4MB-4MJ	2
12	236-8902-04	Hose, 8-8FJX, 8-8FJX x 75"	1	211	202-955-02	Adapter, 8MJ-12MP	3
13	236-5546-04	Hose, 8-8FJX, 8-8FJX x 264"	1	212	236-1043-02	Adapter, 4MJ-8FJ	6
14	236-8906-04	Hose, 8-8FJX90L, 8-8FJX x 260"	1	213	236-1066-02	Adapter, 8MB-4MJ	6
15	236-2300-02	Hose, 8-8FJX90S, 8-8FJX x 73"	2	214	236-2624-02	Adapter, 8MB-12MJ	1
16	236-8889-04	Hose, 6-6FJX90S, 6-6FJX x 52"	1	215	202-208-02	Adapter, 12MJ-12FX90	1
17	236-8949-04	Hose, 6-6FJX90S, 6-6FJX x 128"	1	216	202-208-02	Adapter, 12MP-12MJ	1
18	236-8891-04	Hose, 6-6FJX90S, 6-6FJX x 207"	1	217	236-1033-02	Adapter, 16MB-16MJ	1
19	236-8886-04	Hose, 6-6FJX90L, 6-6FJX x 52"	1	218	202-939-02	Adapter, 16MJ-16FJX-16MJT	1
20	236-8952-04	Hose, 6-6FJX90L, 6-6FJX x 128"	1	219	202-264-02	Adapter, 16MP-16MJ	3
21	236-8888-04	Hose, 6-6FJX90L, 6-6FJX x 207"	1	220	202-939-02	Adapter, 16MJ-16MJ-16FJXT	1
22	236-8892-04	Hose, 4-4FJX, 4-4FJX x 130"	1	221	236-6194-04	Fitting, 4MB-4MJ (.028 orifice)	1
23	236-8893-04	Hose, 4-4FJX, 4-4FJX x115"	2	222	236-3307-02	Adapter, 12MJ-16FJ	2
24	236-8894-04	Hose, 4-4FJX, 4-4FJX x 170"	1	223	236-5311-02	Valve, Check	1
25	236-3505-02	Hose, 4-4FJX, 4-4FJX x 18"	2	224	202-041-02	O'Ring, - 12	1
26	236-8898-04	Hose, 4-4FJX90L, 4-4FJX x 14"	2	225	202-219-02	Adapter, 12MJ-12MP90	1
27	236-8895-04	Hose, 4-4FJX90S, 4-4FJX x 14"	4	226	202-246-02	Adapter, 8MP-8MJ90	3
28	236-8899-04	Hose, 4-4FJX90L, 4-4FJX x 77"	1	227	202-800-02	Adapter, 8MJ-8MJ-8MJ	1
29	236-6091-04	Hose, 4-4FJX90L, 4-4FJX x 80"	1	228	202-937-02	Adapter, 8MJ-12FJ	1
30	236-8950-04	Hose, 4-4FJX90L, 4-4FJX x 84"	1	229	202-204-02	Adapter, 12MJBH-12MP	1
31	236-8951-04	Hose, 4-4FJX90S, 4-4FJX x 84"	1	230	202-206-02	Locknut, -12	1
32	236-8897-04	Hose, 4-4FJX, 4-4FP x 148"	1	231	236-9092-02	Coupler, 3/4" FM Valveless	1
33	236-8913-04	Hose, 4-4FJX, 4-4FP x 16"	3	232	202-014-02	Coupler, 1/2" - Male SAE	1
34	236-6022-04	Hose, 4-4FJX90S, 4-4FJX x 63"	2	233	202-015-02	Coupler, 1/2" - Female SAE	1
35	236-8901-04	Hose, 4-4FJX90L, 4-4FJX x 60"	2	234	202-201-02	Adapter, 8MJBH W/Nut	2
36	236-5568-04	Hose, 4-4FJX90S, 4-4FJX x 82"	1	235	202-207-02	Adapter, 8MJ-8FJX90	2
37	236-8900-04	Hose, 4-4FJX90L, 4-4FJX x 87"	1	236	236-5997-02	Adapter, 8MP Plug	1
38	236-3569-04	Hose, 8-8FJX90S, 8-8FJX x 27"	1	237	236-8799-02	Adapter, 4MJ-4FJX-4MJT	1
39	236-8914-04	Hose, 8-8FJX90L, 8-8FJX x 30"	1	238	236-1033-02	Adapter, 16MB-16MJ	1
40	236-7496-04	Hose, 4-4FJX, 4-4FJX x 42"	1	239	202-275-02	Adapter, 24MP Plug	1
41	236-3273-02	Hose, 4-4FJX, 4-4FJX x 14"	1	240	236-2750-02	Adapter, 24MP-16MJ	1
101	236-8199-02	Valve, Monoblock - SD5\1	1	241	236-1834-02	Adapter, 8MJ-6MP	1
102	236-2931-02	Valve, Check	1	242	236-2598-02	Filter, Mesh - 30	1
103	202-527-02	Handle, Valve	1	243	236-6607-02	Adapter, 8MJ-8FJX45	2

Hydraulic Cylinders	Part Number	Seal Kit
Make-up	236-4430-02	236-4430-02
Break-out (upper)	236-4430-02	236-4430-02
Break-out (lower)	202-552-02	202-552-02
Track Spread	236-8803-02	236-8803-02
Frame Tilt	236-8192-02	236-8192-02
Rear Foot	236-7245-02	236-7245-02

Hydraulic Motors	Part Number	Seal Kit
R. H. Track	236-8207-02	236-9039-02
L. H. Track	236-8207-02	236-9039-02
Thrust	236-8224-02	236-9039-02
Rotation	236-8208-02	236-9039-02

Hydraulic Pumps	Part Number	Seal Kit
Barnes	236-8695-02	236-9375-02
Commercial	236-8201-02	236-9374-02

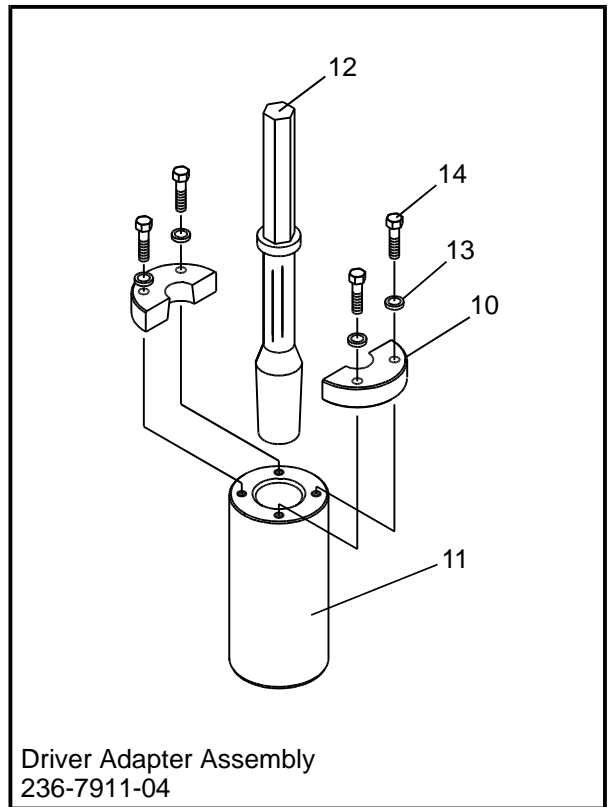
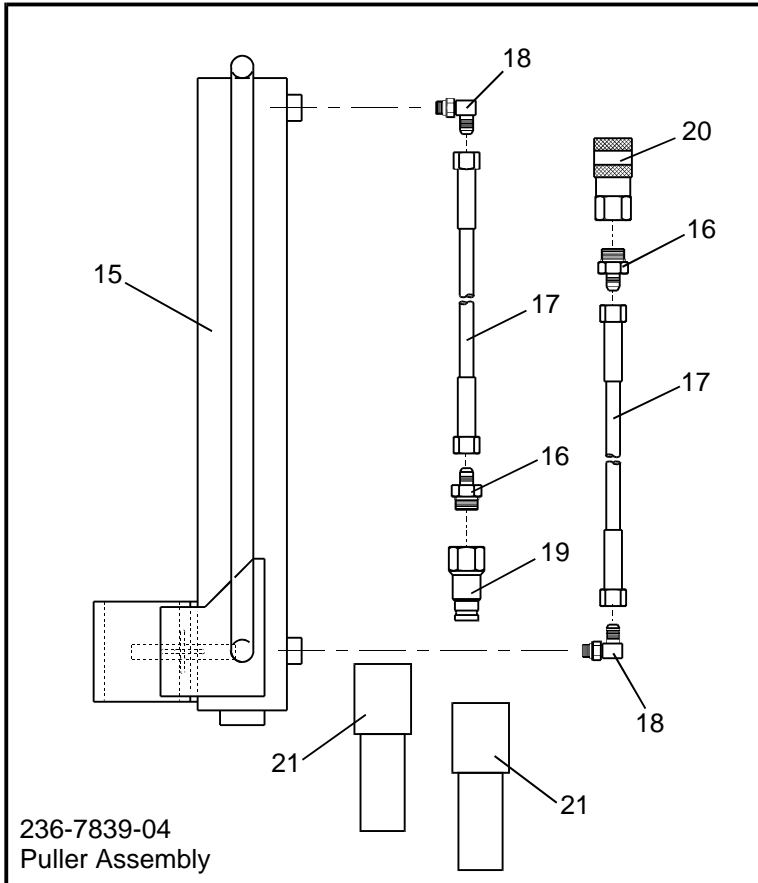
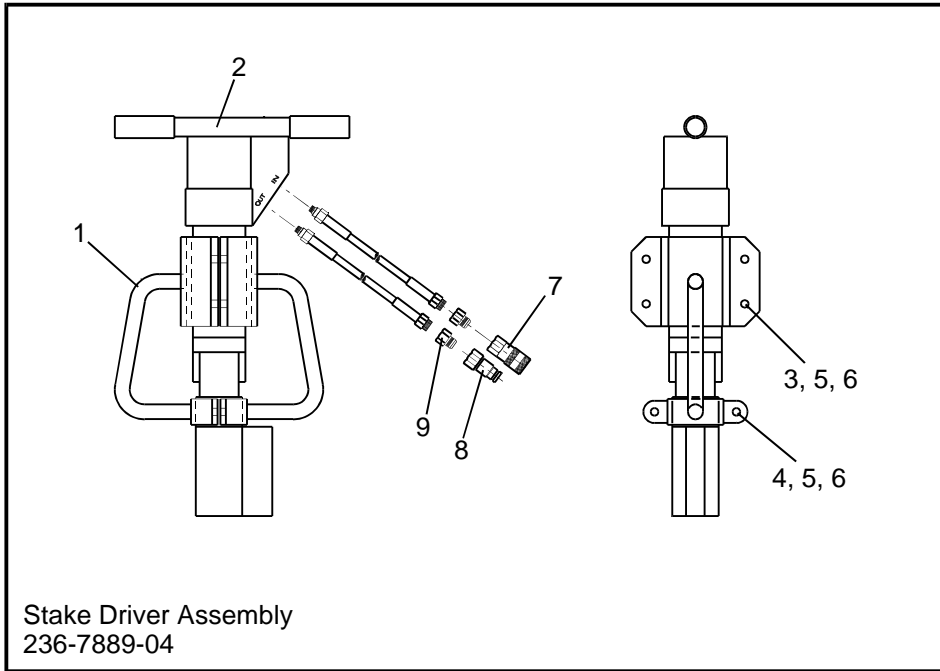
Hydraulic Valves	Part Number
* Front Control	236-8200-02
* Rear Control	236-8198-02
Rear Foot Control	236-8199-02
Sequence	236-7974-02

* For repair kits see Control Panels - Front and Rear (pages 27 & 29)

Hydraulic Gauges	Part Number
0-5,000 psi (hydraulic)	236-4091-02
0-2,000 psi (water)	236-9055-02

Section 4: Accessories

Stakedown Package

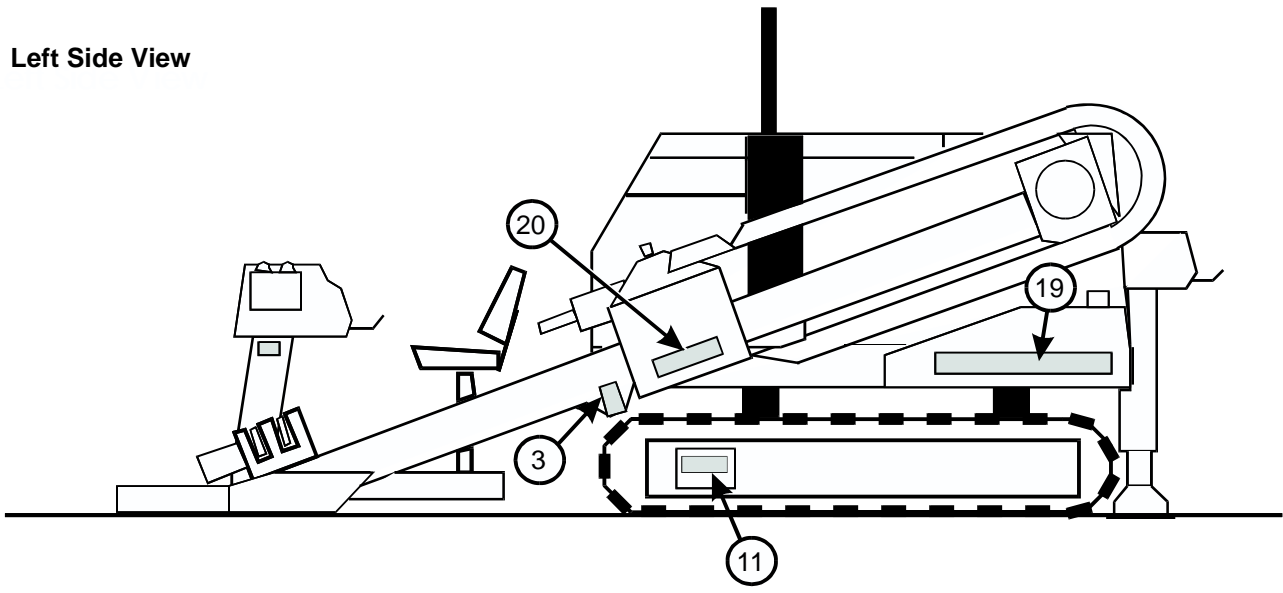
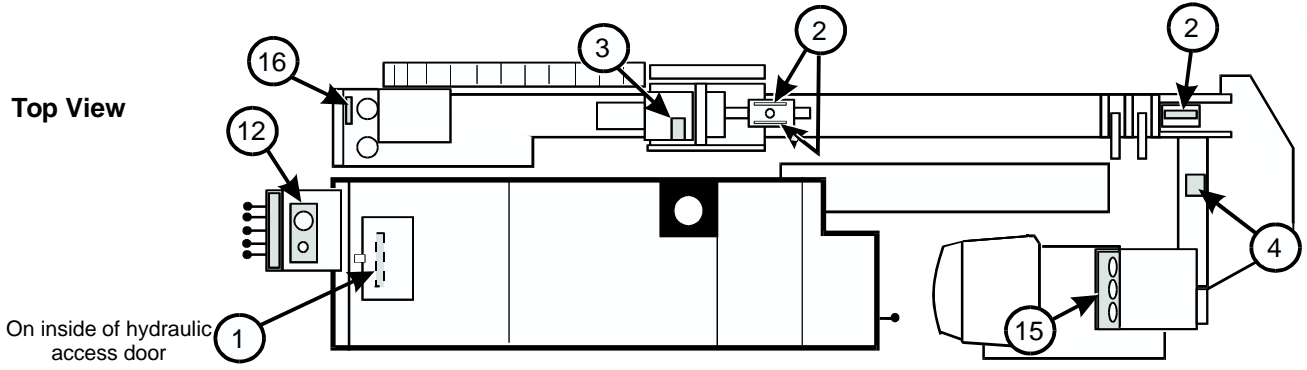
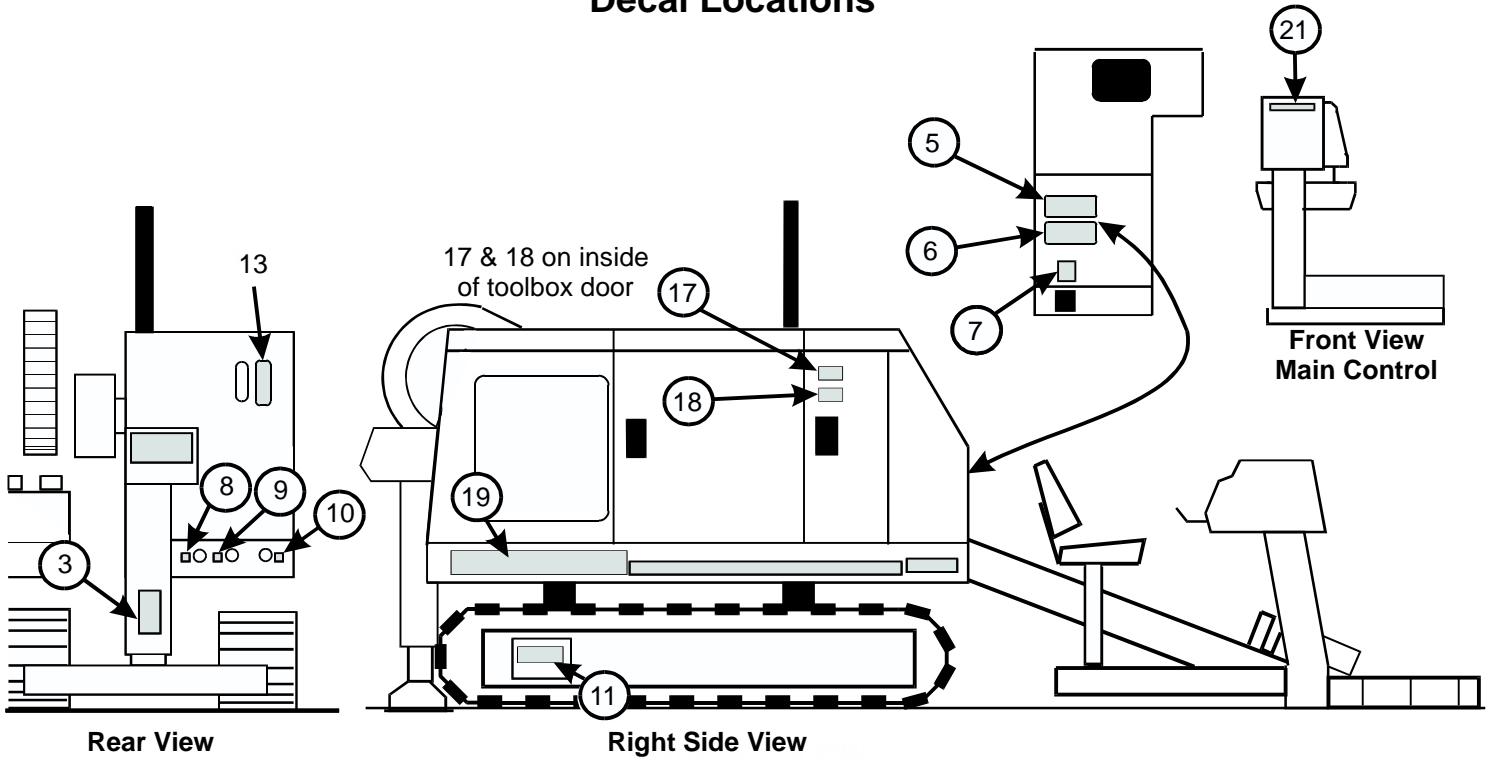


Stakedown Package Parts List

<u>Item</u>	<u>Part Number</u>	<u>Description</u>	<u>Qty</u>
-	236-7889-04	Assembly, Driver	1
1	236-7933-03	Handle	2
2	236-7924-02	Driver, Stake - BR67	1
ref.	236-9376-02	Seal Kit	ref
3	1213X134HB	Bolt, Hex - 1/2 NC x 1 3/4	4
4	1213X112HB	Bolt, Hex - 1/2 NC x 1 1/2	2
5	1213HN	Nut, Hex - 1/2 NC	6
6	12LW	Washer, Lock - 1/2	6
7	202-014-02	coupler, 1/2" SAE - Male	1
8	202-015-02	Coupler, 1/2" SAE - Female	1
9	236-9046-02	Fitting, 8 MM - 6FP	2
-	236-7911-04	Adapter, Driver	1
10	236-7913-03	Mount, Adapter	2
11	236-7912-03	Body, Adapter	1
12	236-7533-02	Shank, Tool	1
13	12LW	Washer, Lock - 1/2	4
14	1213X225HB	Bolt, Hex - 1/2 NC x 2 1/4	4
-	236-7839-04	Assembly, Puller	1
15	236-7804-04	Weldment, Puller	1
ref.	236-5945-02	Seal Kit - Cylinder	ref
16	236-1066-02	Fitting, 8MB - 4MJ	2
17	236-3505-04	Hose, - 4 x 21"	2
18	202-908-02	Fitting, 4MB-4MJ90	2
19	202-014-02	Coupler, 1/2 SAE - male	1
20	202-015-02	Coupler, 1/2 SAE - female	1
21	236-7888-04	Spacer	2
* -	236-8720-04	Assembly, Umbilical	2
* 22	202-946-02	Fitting, 8MB-8MJ	1
* 23	202-014-02	Coupler, 1/2 SAE - male	1
* 24	202-015-02	Coupler, 1/2 SAE - female	1
* 25	236-9218-04	Hose, -8 x 300" (25 feet)	1
* 26	236-4760-04	Cross Sectional Stake	6

* (items not illustrated)

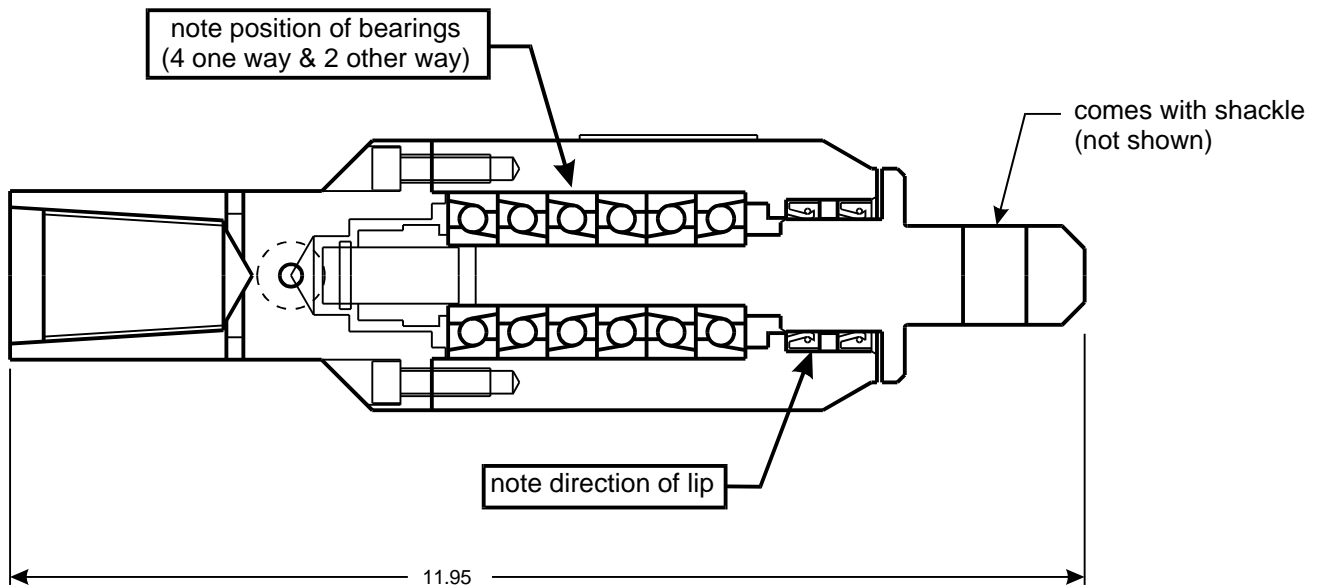
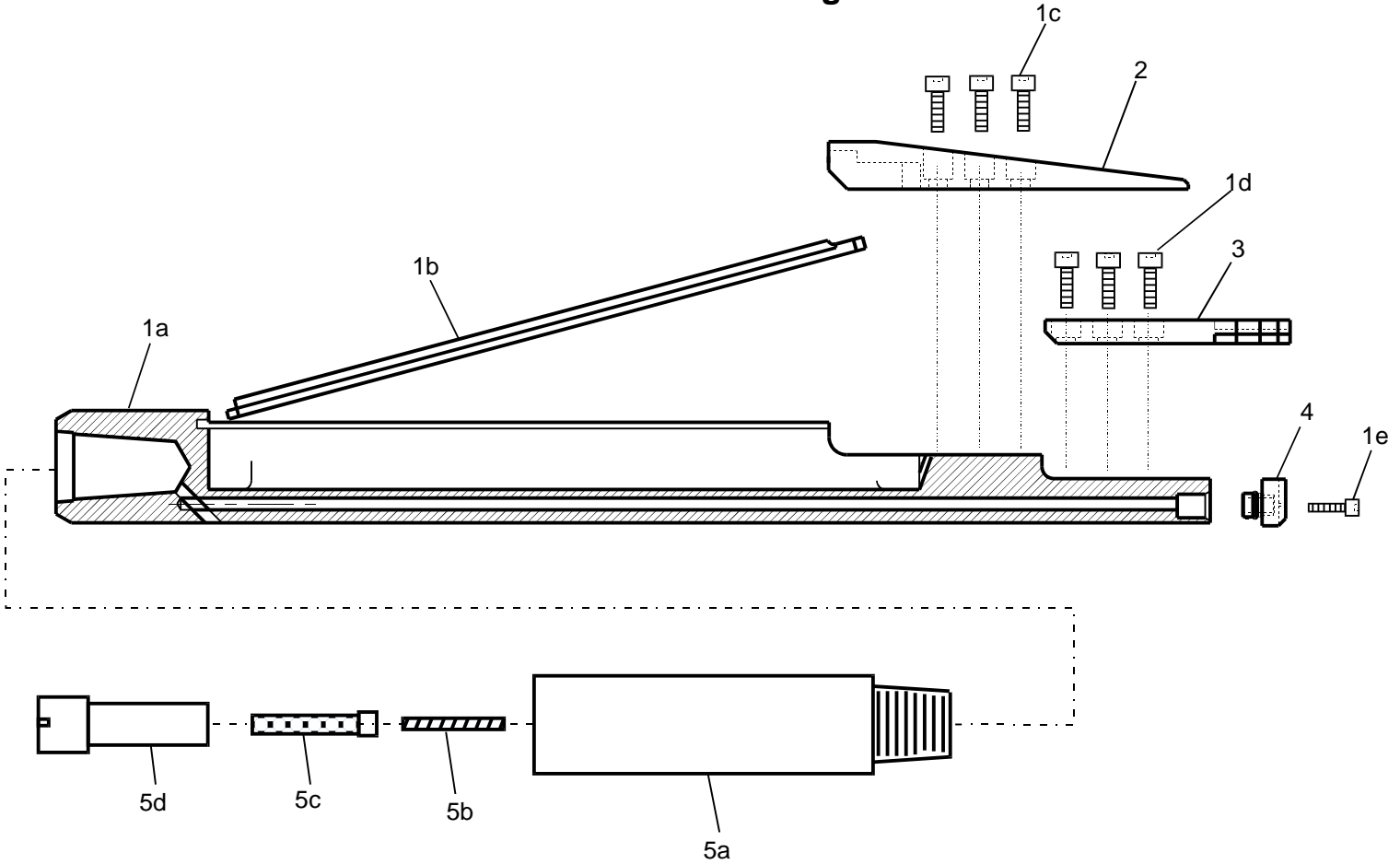
Decal Locations



Decal Kit Parts List

Item	Part Number	Description	Qty
-	236-9010-04	Kit, Decal	1
1	750-103-02	Decal, Safety - Danger hydraulic fluid under pressure	1
2	236-4021-02	Decal, Safety - Danger rotating drill rod	3
3	236-2353-02	Decal, Safety - Caution keep hands clear of pinch points	3
4	236-5682-02	Decal, Safety - Warning do not attach wrenches	1
5	236-2286-02	Decal, Safety - Warning read operators manual	1
6	236-2285-02	Decal, Safety - Warning wear protective clothing	1
7	236-8701-02	Decal, Operation - leveling cylinder	1
8	750-121-02	Decal, Operation - pressure port	1
9	750-122-02	Decal, Operation - return port	1
10	236-5509-02	Decal, Operation - drilling fluid port	1
11	236-6693-02	Decal, Operation - track operation information	2
12	236-8813-02	Decal, Operation - hydraulic pressure/emergency stop	1
13	236-8428-02	Decal, Operation - hydraulic oil level	1
14	236-8687-02	Decal, Operation - track drive control panel	1
15	236-8686-02	Decal, Operation - main control panel	1
16	750-116-02	Decal, Operation - diesel fuel only	1
17	750-114-02	Decal, Identity - American flag/made in USA	1
18	750-104-02	Decal, Identity - Straightline address	1
19	236-8815-02	Decal, Identity - large logo	2
20	236-8817-02	Decal, Identity - model DL905	2
21	236-8816-02	Decal, Identity - small logo	1

Standard Tooling



3" Pulling Swivel
236-6851-04 (item #6)

Note: when changing bearings and grease seals, pack with grease then grease until grease comes out shackle end. use multi-purpose grease.

Standard Tooling Parts List

<u>Item</u>	<u>Part Number</u>	<u>Description</u>	<u>Qty</u>
1.....	236-8843-04.....	Assembly, Drillhead 4AG111.....	1
1a.....	236-8838-04.....	Housing, Drillhead.....	1
1b.....	236-8839-04.....	Cover, Sonde.....	1
1c.....	701-217-02.....	Screw, Cap - 3/8 NC x 1.....	6
1d.....	701-222-02.....	Screw, Cap - 3/8 NC x 3/4.....	6
1e.....	701-110-02.....	Screw, Cap - 5/16 NC x 3/4.....	2
* 1f.....	236-5844-02.....	Decal, Attention.....	1
2.....	236-9026-04.....	Shoe, Steering - 2.50.....	1
2.....	236-9025-04.....	Shoe, Steering - 3.00".....	1
3.....	236-8842-04.....	Cutter, 3.00".....	1
3.....	236-8841-04.....	Cutter, 3.50".....	1
4.....	236-5806-04.....	Nose, Nozzle - .062.....	1
4.....	236-5807-04.....	Nose, Nozzle - .094.....	1
5.....	100-151.....	Assembly, Filter Sub.....	1
5a.....	236-0238-04.....	Housing, Filter Sub.....	1
5b.....	701-170-02.....	Spring, Filter Retaining.....	1
5c.....	102-011-02.....	Filter, 30 mesh - @ .filter sub.....	1
5d.....	100-152.....	Plug, Retaining - Filter.....	1
6.....	236-6851-04.....	Swivel, Pullback - 3.00".....	1
ref.....	236-8037-04.....	**Kit, Bearing & Seal.....	1
* 7.....	100-138.....	DrillPipe, 5' x 1 7/8".....	40
* 8.....	236-2776-04.....	Sub, Saver.....	1
* 9.....	236-2598-02.....	Filter, 30 mesh - @ carriage.....	1
* 10.....	100-159.....	Taperlube, 2 1/2 Gallon.....	1
* 11.....	701-190-02.....	Brush, Lube.....	1
* 12.....	236-5264-02.....	Polymer, EZMUD - 5 Gallon.....	1
* 13.....	236-6807-02.....	Wiper, 1 7/8 Rod.....	1
* 14.....	701-360-02.....	Tool Box.....	1

* items not illustrated

** contains 6 Bearings & 2 Grease Seals